

CLOSURE PLAN FOR GEORGIA POWER COMPANY AP3 LANDFILL AND MONOFILL

**MACON - BIBB COUNTY, GA
NOVEMBER 2018**

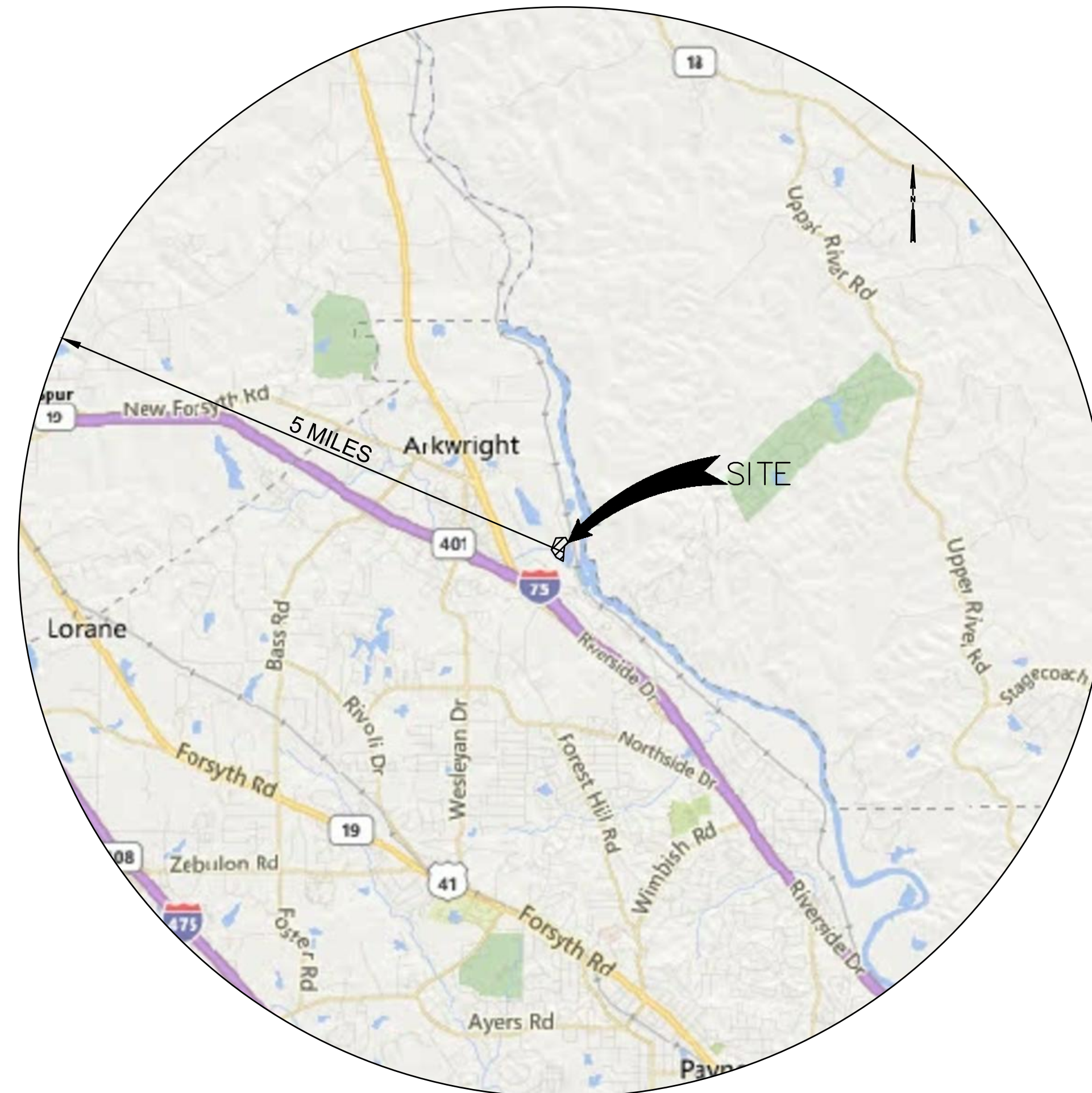
OWNER

GEORGIA POWER COMPANY
241 RALPH MCGILL BOULEVARD NE
ATLANTA, GA 30308
CONTACT: GM ENVIRONMENTAL AFFAIRS
(404) 506-6505

ENGINEER

JACOBS
TEN 10th STREET NW
SUITE 1400
ATLANTA, GA 30309
(404) 978-7600

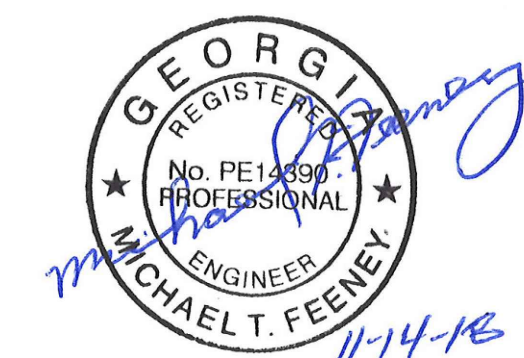
DRAWING INDEX		
DRAWING #	SHEET NUMBER	SHEET TITLE
C-001	1	COVER SHEET
C-002	2	LEGEND SHEET
CX101	3	EXISTING CONDITIONS
CG101	4	FINAL CONDITIONS
CS101	5	SITE MONITORING PLAN
SC401	6	CROSS SECTIONS
C-501	7	DETAILS



PROJECT SITE LOCATION
SCALE: 1" = 1 MILE

REVISION HISTORY		
DATE	SHEETS	REQUESTED BY

JACOBS



Georgia Power

LEGEND

EXISTING	PROPOSED		EXISTING	PROPOSED	
		PERMIT BOUNDARY			BUILDING
		CCR MANAGEMENT BOUNDARY			GROUNDWATER MONITORING WELL
		EXTENT OF CCR			SURFACE WATER MONITORING POINT
		STREAM AND WETLAND BUFFER			OUTLET PROTECTION
		FLOODPLAIN			STONE CHECK DAM
		GROUNDWATER CONTOUR			HAY BALE CHECK DAM
		JURISDICTIONAL WETLAND			FLARED END SECTION
		JURISDICTIONAL STREAM			INLET PROTECTION
		TREELINE			CONSTRUCTION EXIT
		BENCHMARK			NPDES SAMPLING POINT
		DRAINAGE BASIN BOUNDARY LINE			LEACHATE CLEANOUT
		EASEMENT			LEACHATE SUMP
		EDGE OF CELL			LEACHATE MANHOLE / PUMP STATION
		EDGE OF LINER			LEACHATE VAULT
		102' CONTOUR			AIR RELEASE VALVE
		100' CONTOUR			POWER POLE
		UNPAVED ROAD			HEADWALL
		PAVED ROAD			DROP INLET
		GRAVEL ROAD			OVERFLOW STRUCTURE
		SOLID UNDERDRAIN PIPE			GATE
		PERFORATED UNDERDRAIN PIPE			PIEZOMETER
		SOLID LEACHATE PIPE			SPOT ELEVATION
		PERFORATED LEACHATE PIPE			MARKER POST
		LEACHATE FORCE MAIN			DOWNDRAIN PIPE AND SLOPED PAVED HEADWALL
		DITCH CENTERLINE			SEDIMENT TRAP
		STORM DRAINAGE PIPE			ROLLED EROSION CONTROL PRODUCT
		STORM WATER DIVERSION BERM			
		STORM WATER RAIN FLAP			
		SINGLE ROW SILT FENCE			
		DOUBLE ROW SILT FENCE			
		WATER MAIN			
		SANITARY SEWER			
		OVERHEAD POWER LINE			
		UNDERGROUND POWER LINE			
		GAS LINE			
		FENCE			
		RAILROAD			
		HDPE GEOMEMBRANE			
		GEOSYNTHETIC CLAY LINER			
		GEOCOMPOSITE DRAINAGE LAYER			
		GEOTEXTILE FILTER			
		PROTECTIVE SOIL COVER			
		LEACHATE COLLECTION SAND			
		DOWNDRAIN PIPE			
		RIP RAP			
		COMPACTED SOIL			
		CONCRETE			
		GRAVEL / STONE			
		SOIL FILL			



REV.	DATE	DESCRIPTION



LEGEND SHEET

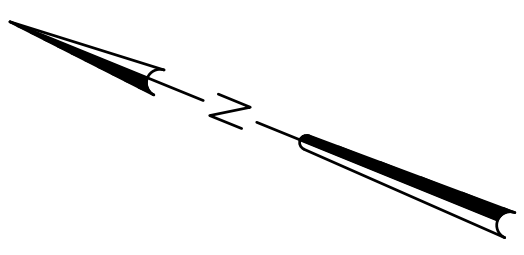
AP3 LANDFILL AND MONOFILL
FOR
GEORGIA POWER COMPANY
FORMER PLANT ARKWRIGHT
MACON - BIBB COUNTY, GA

JACOBS

404.978.7600
JACOBS.COM

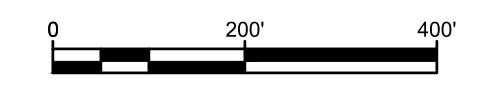
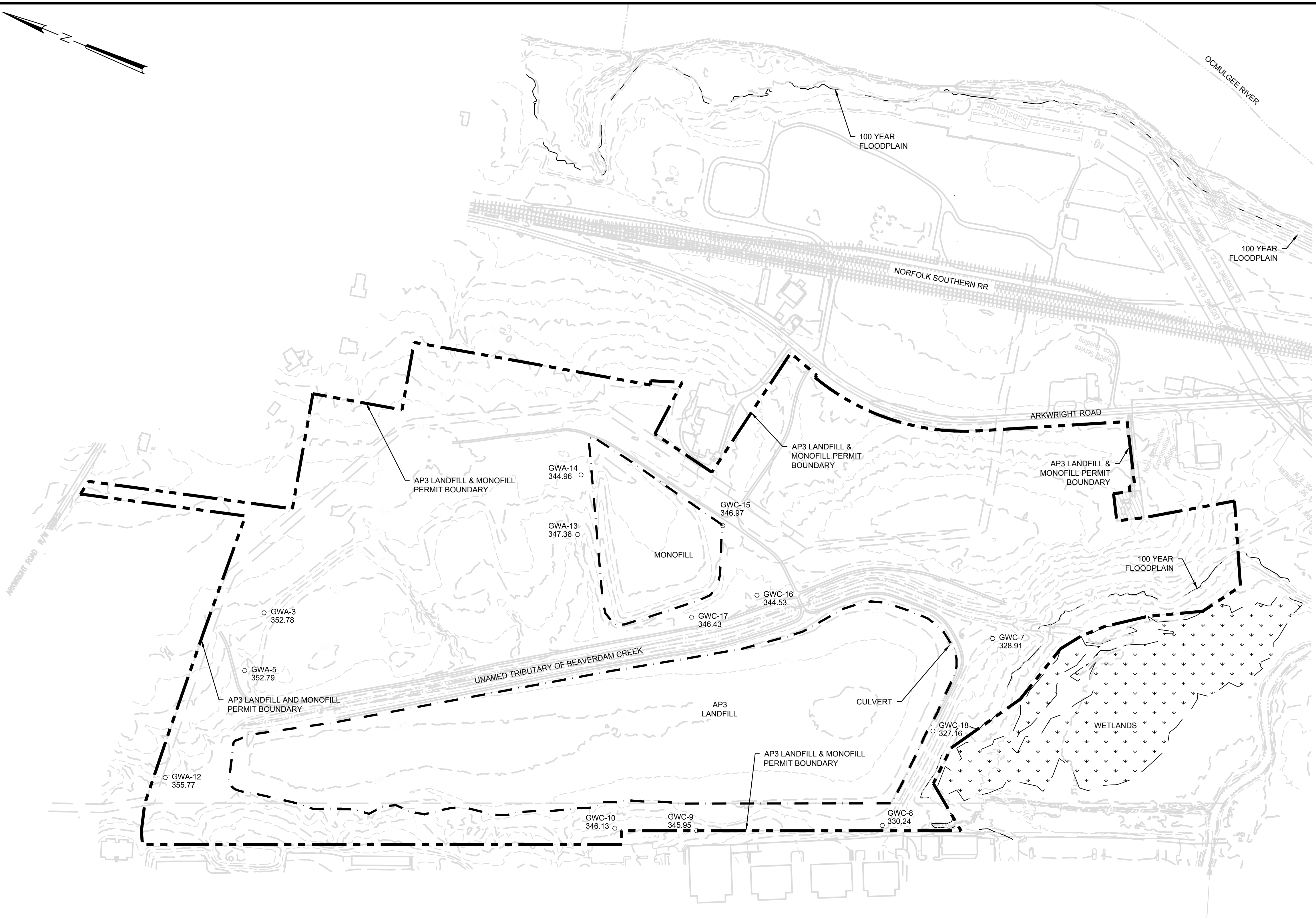
Ten 10th Street NW, Suite 1400, Atlanta, GA 30309

PROJ. NO.	35DK9203	DWG.	C-002	EDIT
SCALE	NTS	SHEET 2 OF 7		
DATE	NOVEMBER 2018			



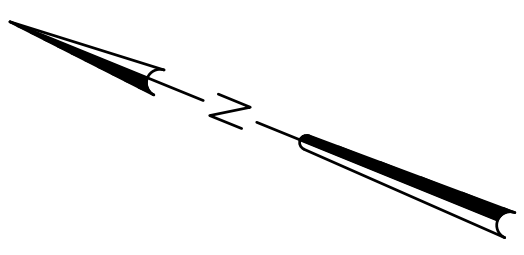
NOTES:

1. FOR LEGEND SEE DRAWING C-002.
2. TOPOGRAPHIC DATA PROVIDED BY DONALDSON, GARRETT & ASSOCIATES, INC., DATED 06-26-2018
3. WETLAND DELINEATION PERFORMED BY JACOBS, DATED 10-17-2018.
4. 100 YEAR FLOODPLAIN DATA TAKEN FROM THE FEMA INSURANCE RATE MAP (FIRM) PANEL 13021C0040G.

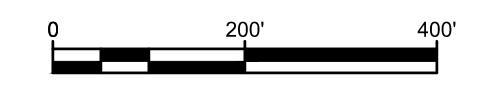
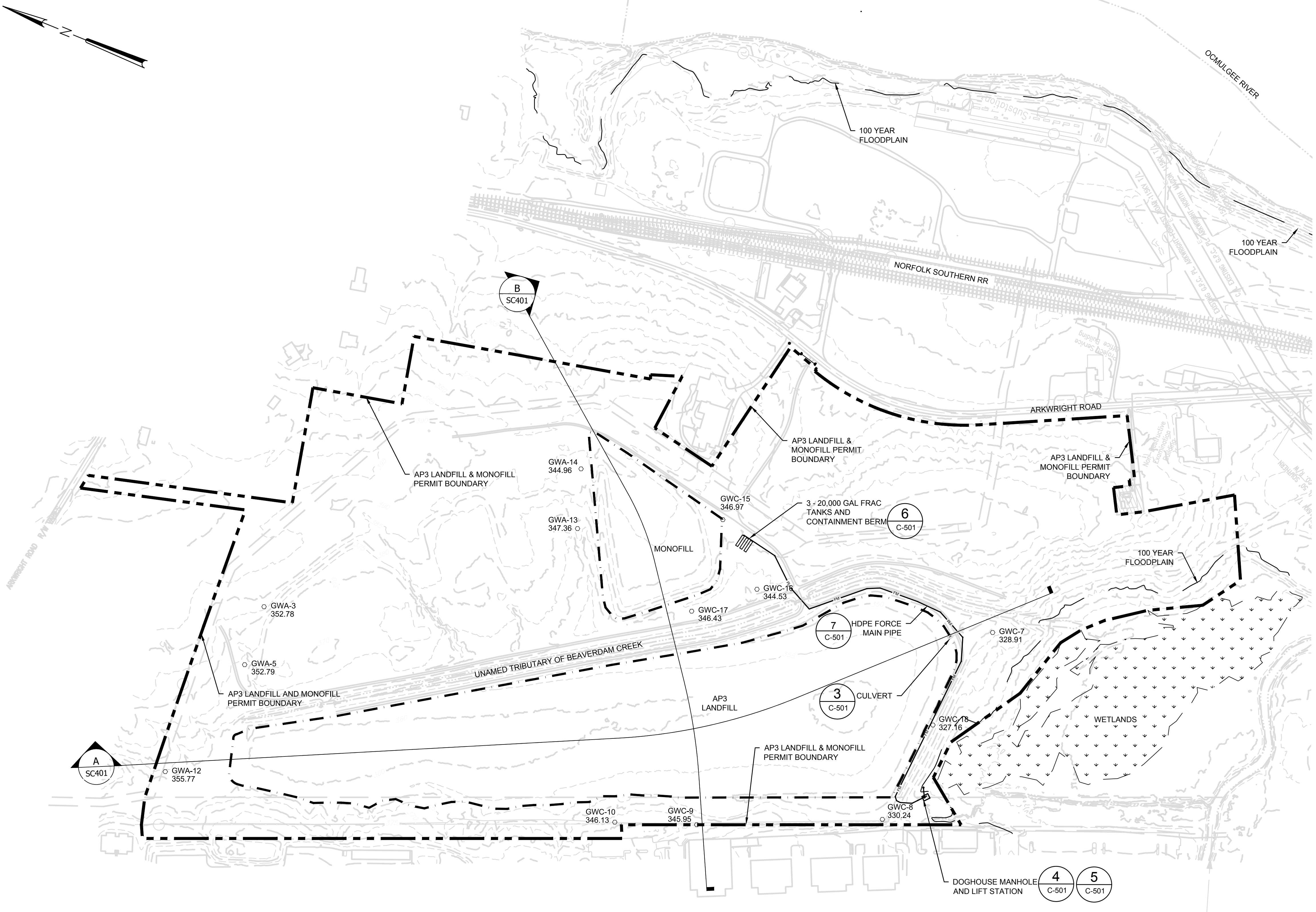


REV.	DATE	DESCRIPTION

EXISTING CONDITIONS			
AP3 LANDFILL AND MONOFILL			
FOR GEORGIA POWER COMPANY FORMER PLANT ARKWRIGHT MACON - BIBB COUNTY, GA			
JACOBS			
404.978.7600 JACOBS.COM		Ten 10th Street NW, Suite 1400, Atlanta, GA 30309	
PROJ. NO.	35DK9203	DWG.	CX101
SCALE	AS SHOWN	SHEET 3 OF 7	
DATE	NOVEMBER 2018		



- NOTES:**
1. FOR LEGEND SEE DRAWING C-002.
 2. TOPOGRAPHIC DATA PROVIDED BY DONALDSON, GARRETT & ASSOCIATES, INC., DATED 06-26-2018.
 3. WETLAND DELINEATION PERFORMED BY JACOBS, DATED 10-17-2018.
 4. 100 YEAR FLOODPLAIN DATA TAKEN FROM THE FEMA INSURANCE RATE MAP (FIRM) PANEL 13021C0040G.



REV.	DATE	DESCRIPTION



FINAL CONDITIONS

AP3 LANDFILL AND MONOFILL

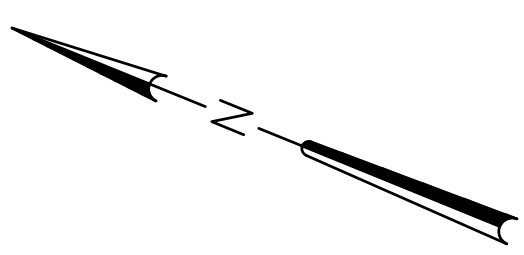
FOR
GEORGIA POWER COMPANY
FORMER PLANT ARKWRIGHT
MACON - BIBB COUNTY, GA

JACOBS

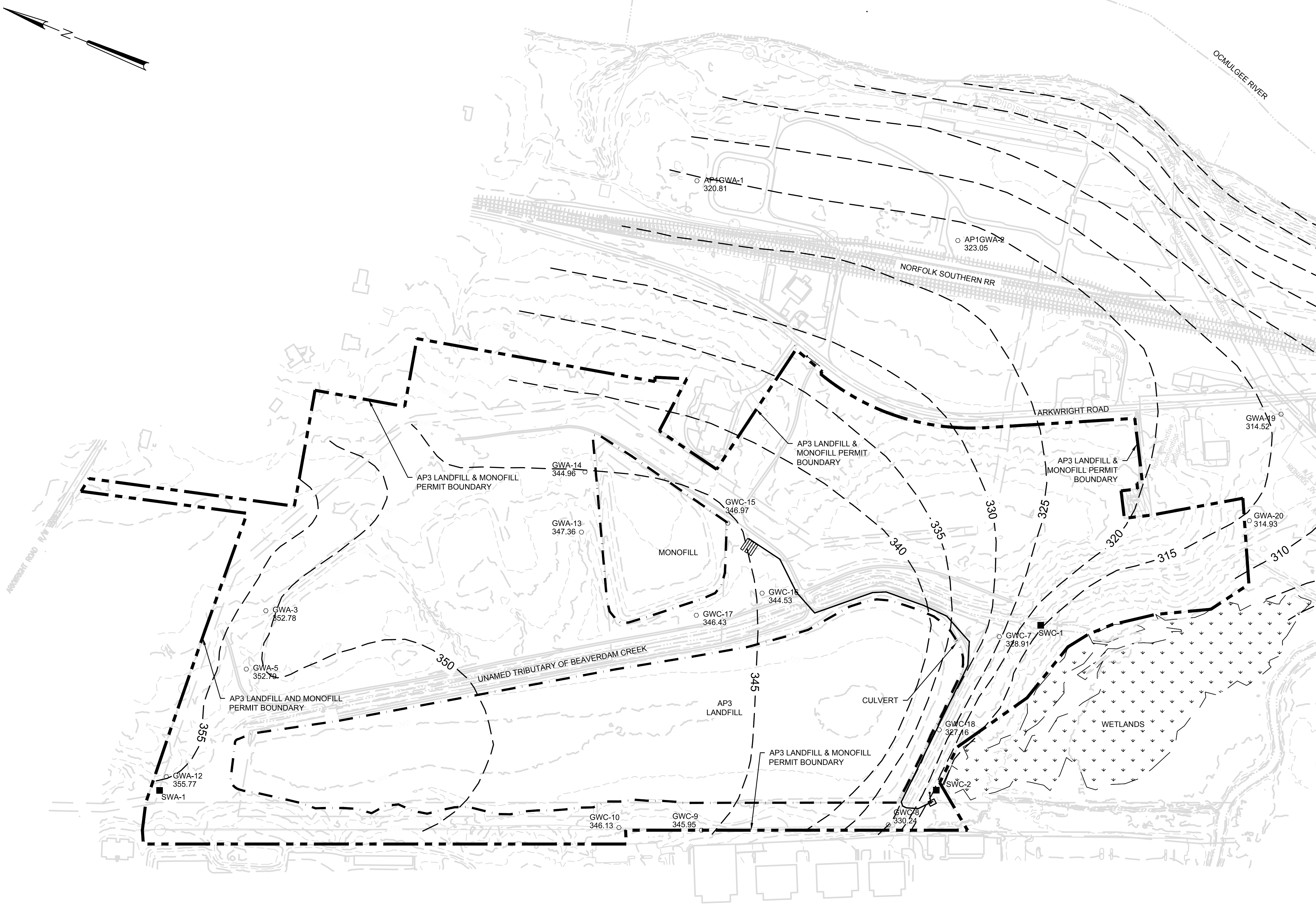
404.978.7600
JACOBS.COM

Ten 10th Street NW, Suite 1400, Atlanta, GA 30309

PROJ. NO.	35DK9203	DWG.	CG101	EDIT
SCALE	AS SHOWN	SHEET 4 OF 7		
DATE	NOVEMBER 2018			



- NOTES:
1. SEE DRAWING C-002 FOR LEGEND
 2. POTENTIOMETRIC CONTOURS BASED ON WATER LEVEL MEASUREMENTS TAKEN ON 09-11-2018



BRET MCCLELLAN
 REGISTERED PROFESSIONAL ENGINEER
 No. PE14397
 11/14/18

MICHAEL T. FEENEY
 REGISTERED PROFESSIONAL ENGINEER
 No. PE14397
 11-14-18

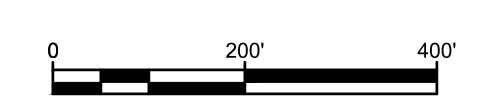


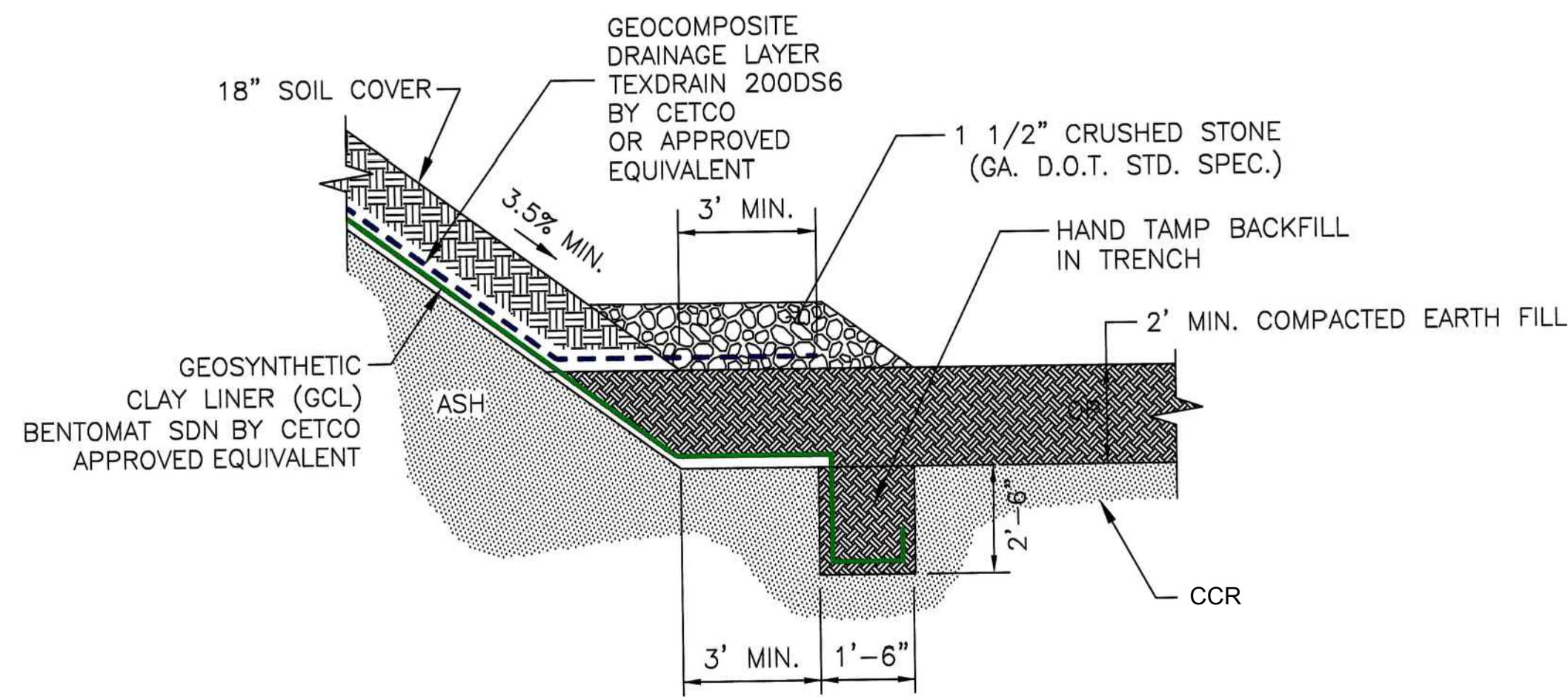
SITE MONITORING PLAN
 AP3 LANDFILL AND MONOFILL
 FOR
 GEORGIA POWER COMPANY
 FORMER PLANT ARKWRIGHT
 MACON - BIBB COUNTY, GA



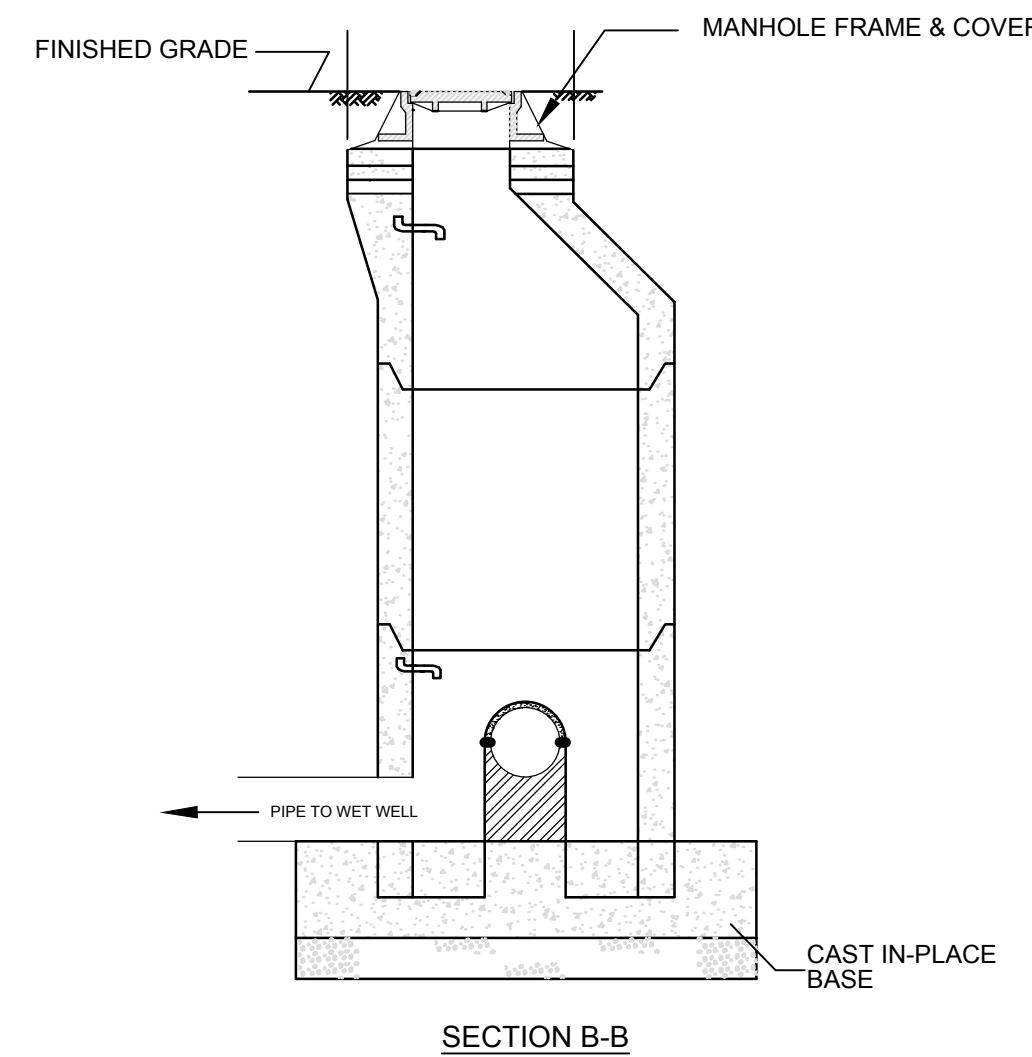
REV.	DATE	DESCRIPTION

404.978.7600 JACOBS.COM		Ten 10th Street NW, Suite 1400, Atlanta, GA 30309	
PROJ. NO.	35DK9203	DWG.	CS101
SCALE	AS SHOWN	SHEET 5 OF 7	
DATE	NOVEMBER 2018		

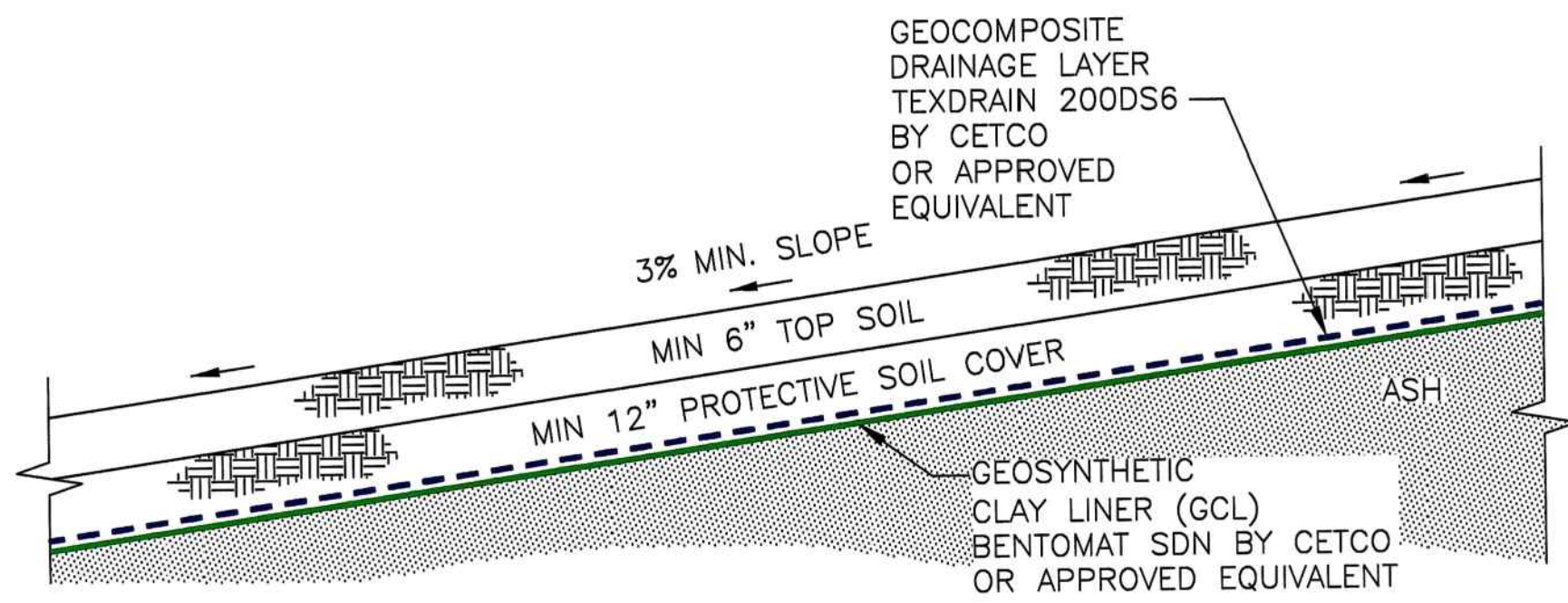




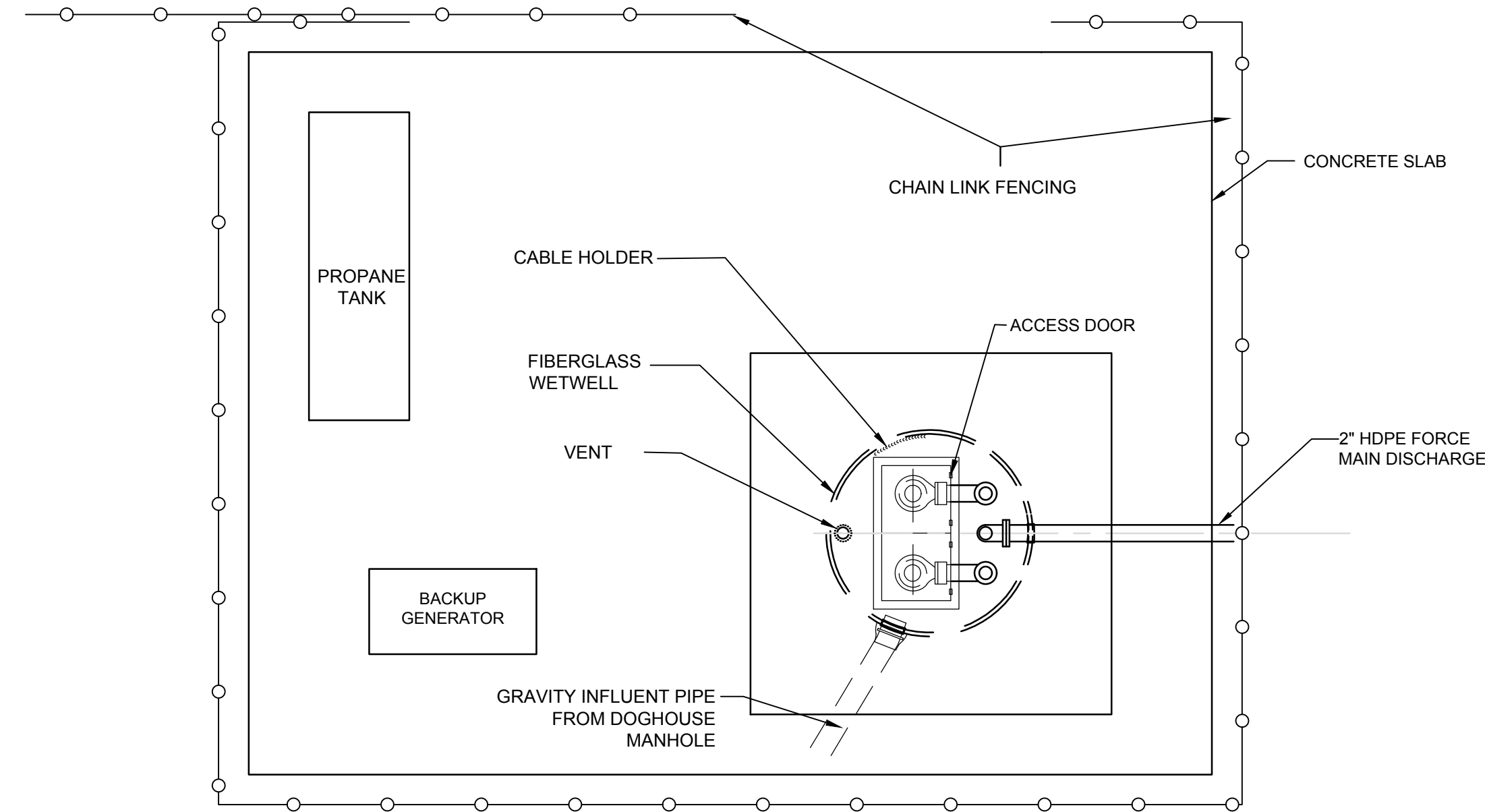
1
C-501
**TOE DRAIN DETAIL FOR
GEOCOMPOSITE DRAINAGE LAYER**
NOT TO SCALE



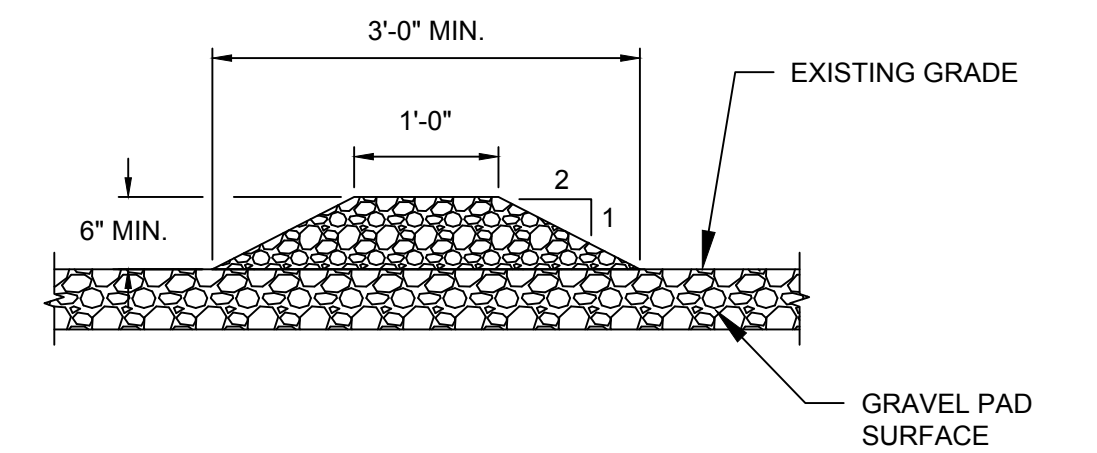
4
C-502
DOGHOUSE MANHOLE DETAIL
NTS



NOTE: FOR VEGETATION SCHEDULE SEE H-8145
2
C-501
GCL FINAL SOIL COVER TYPICAL SECTION
NOT TO SCALE

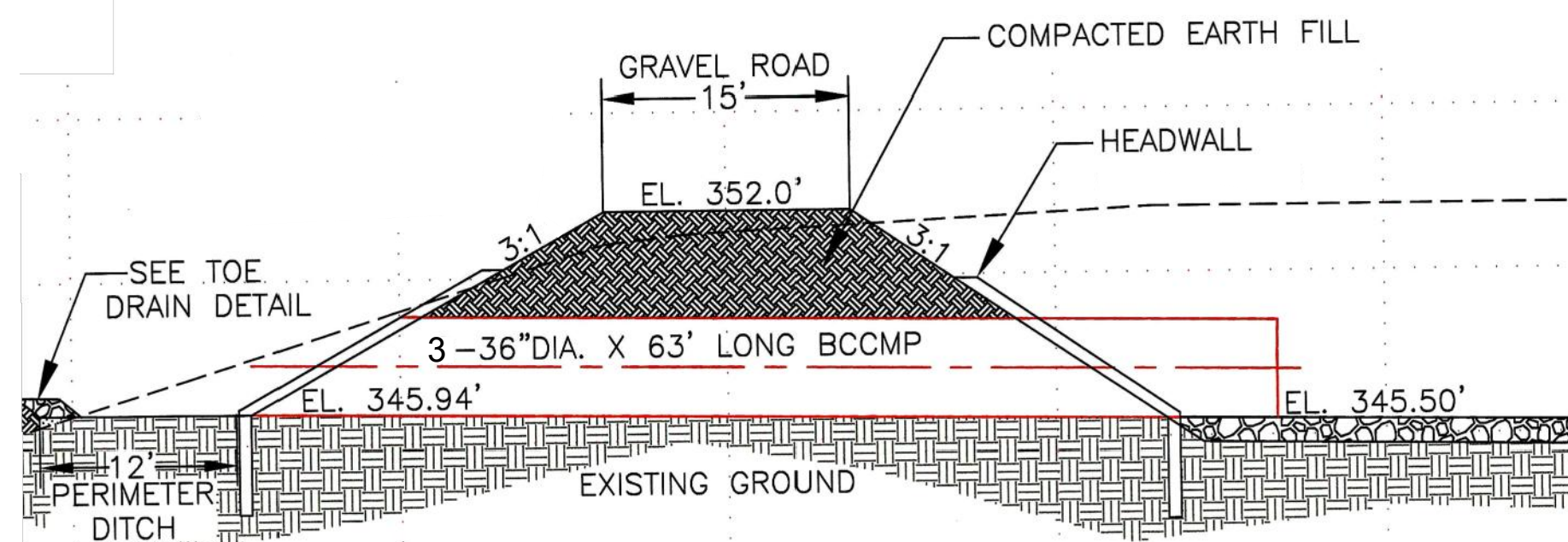


5
C-501
LIFT STATION PLAN
NTS

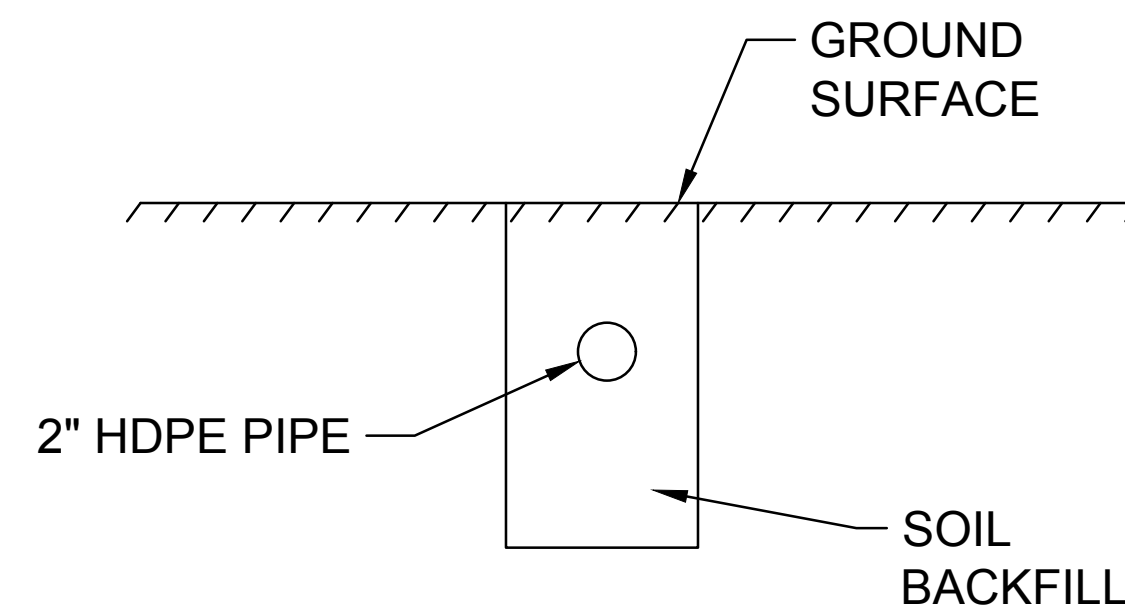


- NOTES:
1. DIMENSION SHOWN ARE MINIMUM VALUES. ACTUAL DIMENSIONS WILL BE DICTATED BY SITE CONDITIONS.
 2. CONSTRUCT BERM WITH A CRUSHER RUN TO LIMIT WATER FROM PENETRATING. COMPACT TO 95% MODIFIED PROCTOR DENSITY TO AVOID WASHOUT.
 3. MAINTAIN A UNIFORM TOP OF BERM ELEVATION TO ACCOUNT FOR VARIATIONS OF EXISTING GRADE.

6
C-501
CONTAINMENT BERM DETAIL
NTS



3
C-501
CULVERT DETAIL



7
C-501
HDPE FORCE MAIN PIPE
NTS

- NOTES:
1. DETAIL 1 & 2 WERE TAKEN FROM EPD APPROVED DRAWINGS FOR PERMIT NO. 011-025D(LI) ORIGINAL DRAWINGS STAMPED BY GARY H. MCWHORTER, P.E. AND APPROVED BY EPD ON 9/2/2008.



Georgia Power

REV.	DATE	DESCRIPTION

DETAILS

AP3 LANDFILL AND MONOFILL

FOR
GEORGIA POWER COMPANY
FORMER PLANT ARKWRIGHT
MACON - BIBB COUNTY, GA

JACOBS

404.978.7600
JACOBS.COM
Ten 10th Street NW, Suite 1400, Atlanta, GA 30309

PROJ. NO.	35DK9203	DWG.	C-501	EDIT
SCALE	NTS	SHEET 7 OF 7		
DATE	NOVEMBER 2018			