

257.83 (b)(2)	REPORT OF ANNUAL INSPECTION OF CCR SURFACE IMPOUNDMENT		
	FACILITY NAME: Plant Yates – Ash Pond 3		
	OWNER/OPERATOR OF FACILITY: Georgia Power Company		
	INSPECTION DATE: December 15, 2015		
	INSPECTING ENGINEER: Hugh H. Armitage, PE (GA 21693)		
	Based on the results of my inspection and review of the data provided, it is my professional opinion that the report has been completed in accordance with 40 CFR 257.83(b).		
(i)	ANY CHANGES IN GEOMETRY OF THE IMPOUNDING STRUCTURE SINCE THE PREVIOUS ANNUAL INSPECTION?	N/A*	
	(IF YES, DESCRIBE):		
(ii)	LOCATION AND TYPE OF EXISTING INSTRUMENTATION	SEE ATTACHED TABLE and PLAN	
(ii)	MAXIMUM RECORDED READING OF EACH INSTRUMENT SINCE PREVIOUS ANNUAL INSPECTION	N/A*	
(iii)	APPROXIMATE MINIMUM, MAXIMUM AND PRESENT DEPTH AND ELEVATION OF THE IMPOUNDED WATER SINCE PREVIOUS ANNUAL INSPECTION		
	MIN. DEPTH: N/A	MAX. DEPTH: N/A	PRESENT DEPTH: 1.6 ft. ***
	MIN. ELEVATION: N/A	MAX. ELEVATION: N/A	PRESENT. ELEVATION: 750.4 ft.
(iii)	APPROXIMATE MINIMUM, MAXIMUM AND PRESENT DEPTH AND ELEVATION OF CCR SINCE PREVIOUS ANNUAL INSPECTION.		
	MIN. DEPTH: N/A	MAX. DEPTH: N/A	PRESENT DEPTH: 18.8 ft.
	MIN. ELEVATION: N/A	MAX. ELEVATION: N/A	PRESENT ELEVATION: 748.8 ft.
(iv)	APPROXIMATE STORAGE CAPACITY OF IMPOUNDING STRUCTURE AT TIME OF INSPECTION.	750,200 yd ³ **	
(v)	APPROXIMATE VOLUME OF IMPOUNDED WATER AND CCR AT TIME OF INSPECTION	WATER: 0 yd ³ **	CCR: 750,200 yd ³ **
(vi)	ANY APPEARANCE OF AN ACTUAL OR POTENTIAL STRUCTURAL WEAKNESS OF THE CCR UNIT, IN ADDITION TO ANY EXISTING CONDITIONS THAT ARE DISRUPTING OR HAVE THE POTENTIAL TO DISRUPT THE OPERATION AND SAFETY OF THE CCR UNIT AND APPURTENANT STRUCTURES?	NO	
	(IF YES, DESCRIBE):		
(vii)	ANY OTHER CHANGE(S) WHICH MAY HAVE AFFECTED THE STABILITY OR OPERATION SINCE THE PREVIOUS ANNUAL INSPECTION?	N/A*	
	(IF YES, DESCRIBE):		

* This is the first 'Annual inspection by a qualified professional engineer' performed in accordance with 40 CFR Part 257.83. This information will be included in subsequent annual inspection reports.

** Cubic yard figures are estimates derived by qualified personnel from available information

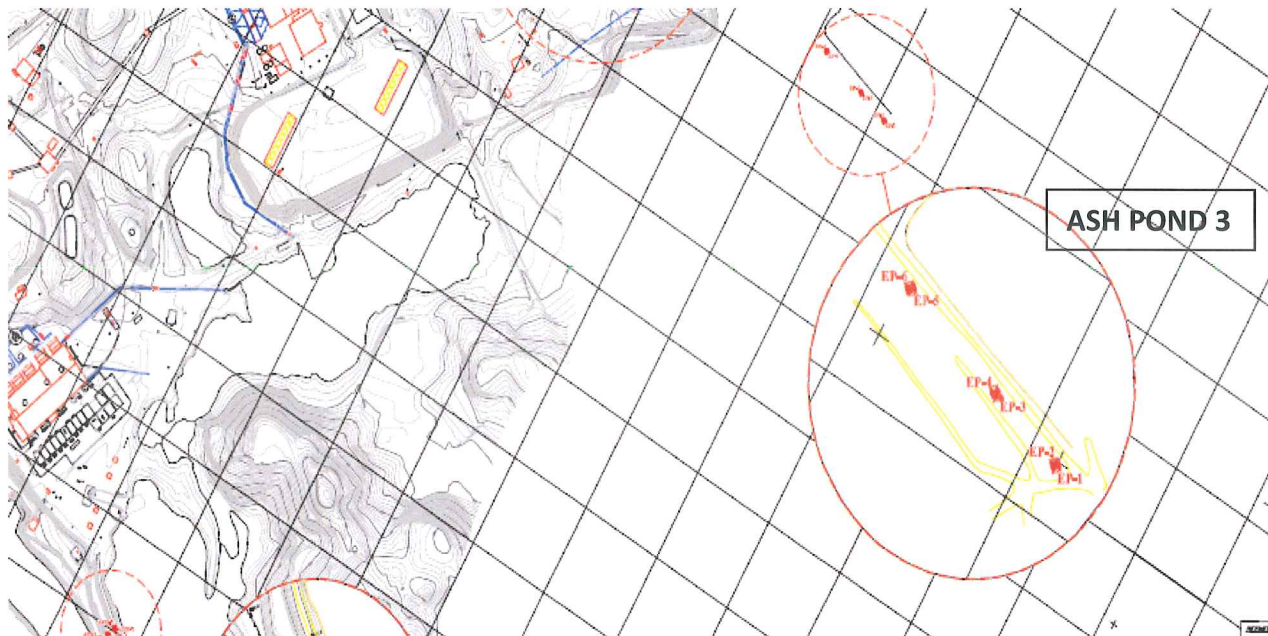
*** The ponded water in Ash Pond 3 is due to surface water inflow (pond does not receive CCR).



Plant Yates – Location and Type of Existing Instrumentation - Ash Pond 3

(To be read in conjunction with accompanying report titled “Report of Annual Inspection of CCR Surface Impoundment”)

		Location of Instrument	
Instrument No.	Type of Instrument	Northing	Easting
EP-1	Piezometer	1256501.06	2074989.17
EP-2	Piezometer	1256505.95	2074993.04
EP-3	Piezometer	1256695.48	2075039.36
EP-4	Piezometer	1256704.31	2075043.75
EP-5	Piezometer	1256979.79	2075116.41
EP-6	Piezometer	1256985.02	2075118.90



Not to Scale