

CLOSURE DRAWINGS

FOR

GEORGIA POWER PLANT YATES

INACTIVE CCR LANDFILL - R6 CCR LANDFILL

COWETA COUNTY, GEORGIA

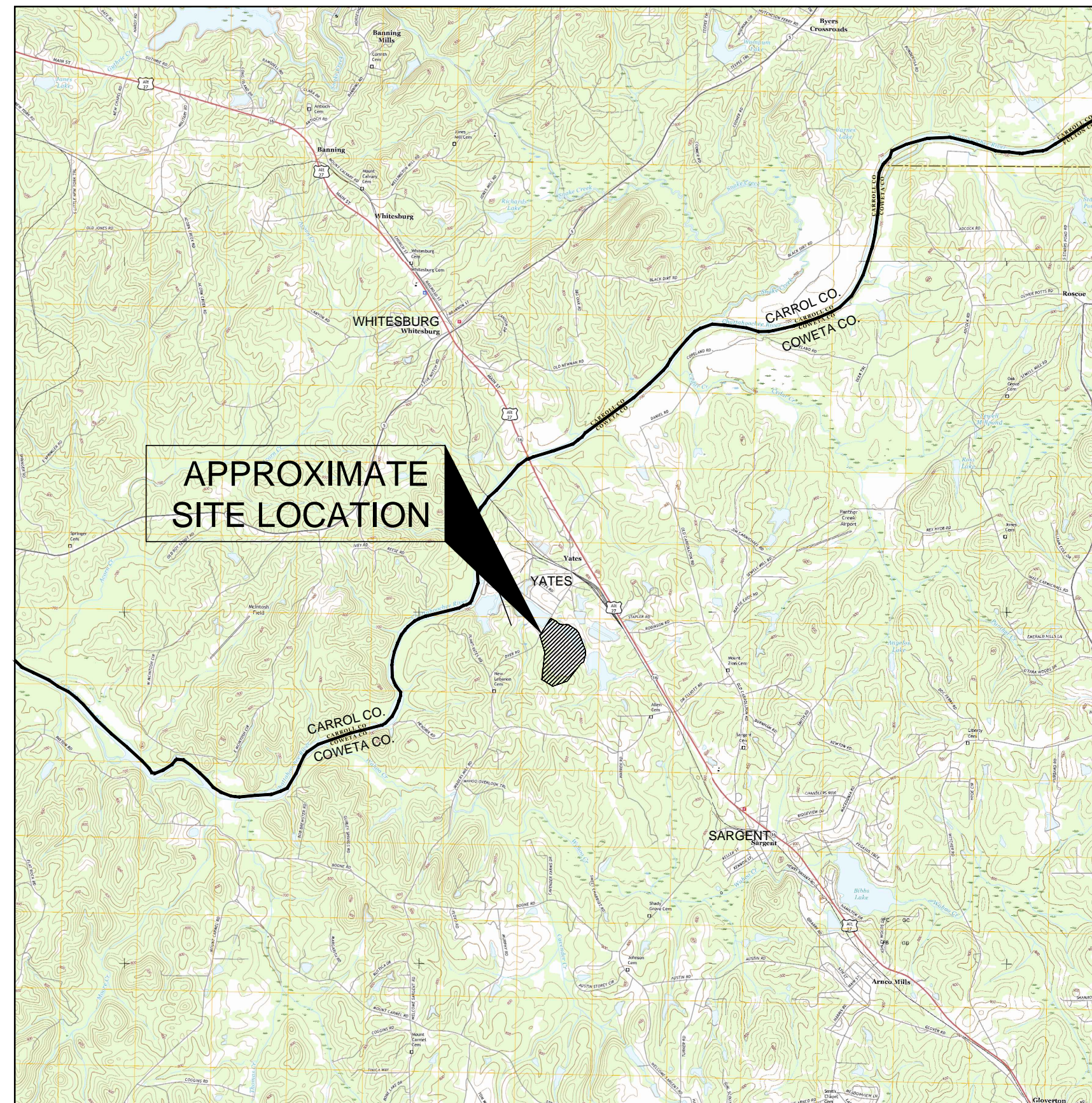
NOVEMBER 2018

PREPARED FOR:

GEORGIA POWER COMPANY
241 RALPH MCGILL BLVD, NE
ATLANTA, GA 30308
TELEPHONE: (404) 506-6505

SITE ADDRESS

PLANT YATES
708 DYER ROAD
NEWNAN, GA30263
(770) 252-0650



PROJECT SITE LOCATION

SCALE: 1" = 1 MILE

SOURCES: USGS QUAD MAP DATED 2017 WHITESBURG, GA
USGS QUAD MAP DATED 2017 NEWNAN NORTH, GA
USGS QUAD MAP DATED 2017 HULETT, GA
USGS QUAD MAP DATED 2017 RICO, GA

REVISION HISTORY

DATE	SHEETS	REQUESTED BY

INDEX OF DRAWINGS

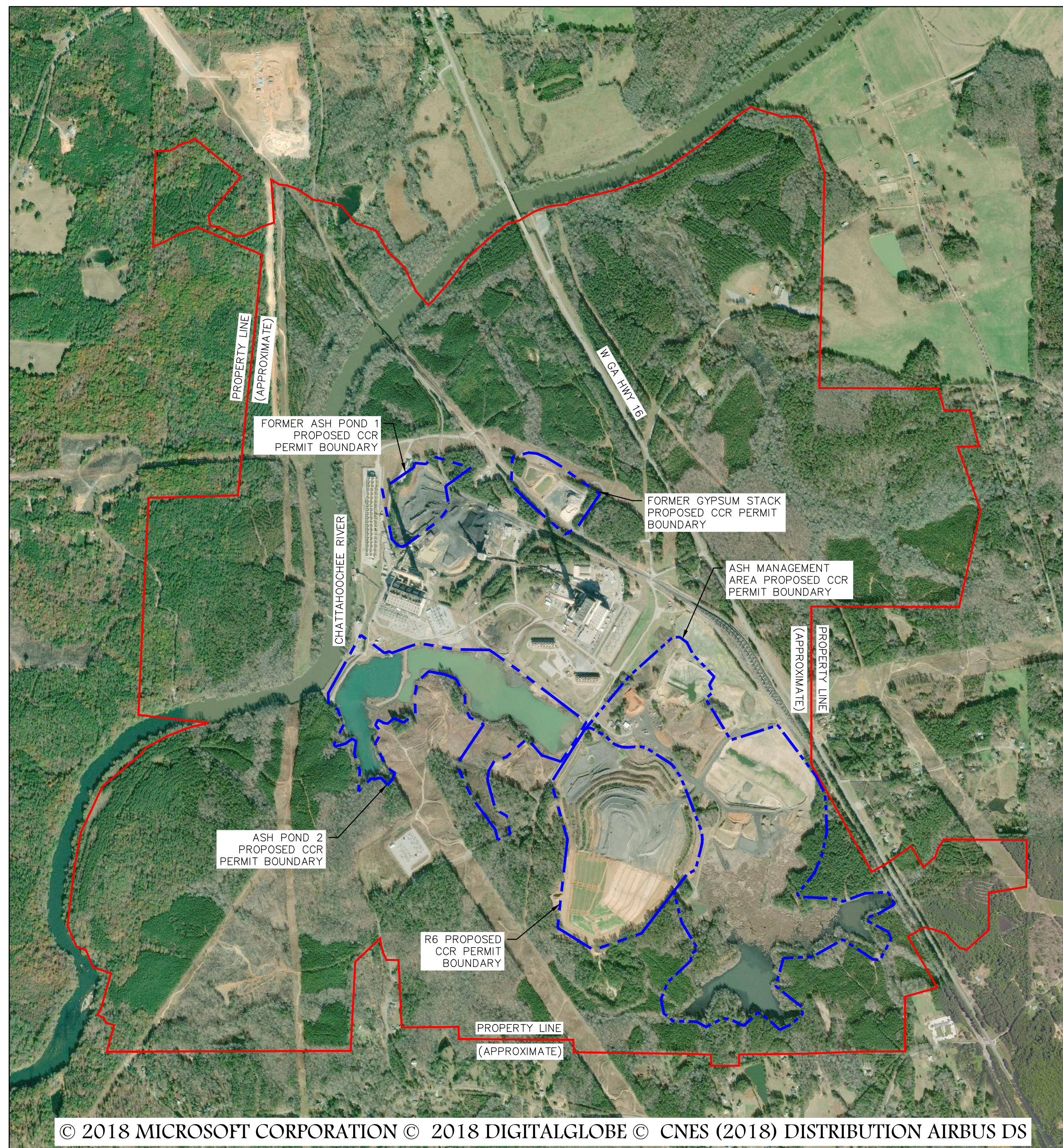
SHEET NO.	DESCRIPTION
1	COVER
2	PROPERTY BOUNDARY & INDEX
3	PERMIT BOUNDARY & LEGAL DESCRIPTION
4	EXISTING CONDITIONS
5	FINAL GRADING PLAN
6	EROSION & SEDIMENTATION CONTROL PLAN
7	DETAILS

P:\Industrial\USA - Southern Company\107 - Plant Yates CCR Permitting\3 - CCR Permit REV\Drawings\004-107-R6-01 (Coweta).dwg 11/15/18 MATHIEU TRUNNELL

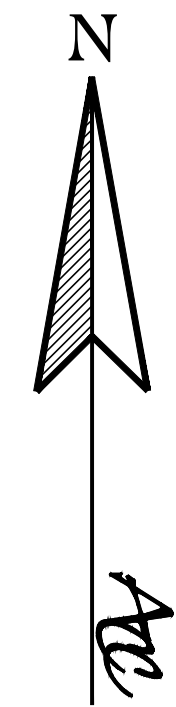


Atlantic Coast Consulting, Inc.
630 Colonial Park Drive, Suite 110, Roswell, GA 30075
770-594-5998





SOURCE: BING MAP 2018
SCALE: 1" = 1000'



LEGEND		
EXISTING	NEW	DESCRIPTION
		APPROXIMATE PROPERTY BOUNDARY
		CCR PERMIT BOUNDARY
		10' CONTOUR
		2' CONTOUR
		CONCRETE FLUME
		SILT FENCE
		PAVED ROAD
		TREELINE
		RAILROAD
		GROUNDWATER MONITORING WELL
		PIEZOMETER
		OVERHEAD POWER LINE
		POWER POLE
		TRANSMISSION LINE TOWER
		PERMANENT IDENTIFICATION MARKER
		AREA TO BE CLOSED IN PLACE

- GENERAL NOTES:**
- EXISTING PLANT YATES AERIAL TOPOGRAPHY PROVIDED BY GEORGIA POWER DATED MAY 26, 2017.
 - PROPERTY BOUNDARY SHOWN PROVIDED BY SOUTHERN COMPANY SERVICES IN ELECTRONIC FORMAT AND IS APPROXIMATE.
 - ALL DESIGN BY OTHERS. THESE PLANS ARE A DEPICTION OF THE REMAINING 14 ACRES TO BE CLOSED IN PLACE.
 - ALL EROSION CONTROL MEASURES SHALL BE IN CONFORMANCE WITH THE CURRENT EDITION OF THE "MANUAL FOR EROSION AND SEDIMENT CONTROL IN GEORGIA." STORMWATER CONTROLS AND BEST MANAGEMENT PRACTICES SHALL BE DESIGNED, INSTALLED AND MAINTAINED IN ACCORDANCE WITH THE APPLICABLE NPDES CONSTRUCTION STORMWATER DISCHARGE GENERAL PERMIT, NPDES INDUSTRIAL STORMWATER DISCHARGE GENERAL PERMIT AND/OR THE FACILITY'S NPDES INDUSTRIAL WASTEWATER DISCHARGE INDIVIDUAL PERMIT.
 - STORM WATER DISCHARGES ASSOCIATED WITH CLOSURE ACTIVITIES WILL BE COVERED UNDER THE APPLICABLE NPDES CONSTRUCTION STORMWATER DISCHARGE GENERAL PERMIT, NPDES INDUSTRIAL STORMWATER DISCHARGE GENERAL PERMIT AND/OR THE FACILITY'S NPDES INDUSTRIAL WASTEWATER DISCHARGE INDIVIDUAL PERMIT.
 - STATE WATERS BUFFERS SHALL REMAIN UNDISTURBED, EXCEPT WHERE ENCROACHMENT IS REQUIRED TO FACILITATE CLOSURE ACTIVITIES. UNLESS OTHERWISE EXEMPTED BY THE APPROPRIATE NPDES CONSTRUCTION STORMWATER DISCHARGE GENERAL PERMIT, A STATE WATERS BUFFER VARIANCE SHALL BE OBTAINED FROM GEORGIA EPD'S WATERSHED PROTECTION BRANCH PRIOR TO BUFFER ENCROACHMENT. GEORGIA EPD'S SOLID WASTE MANAGEMENT BRANCH SHALL BE NOTIFIED WHEN GEORGIA POWER ENVIRONMENTAL AFFAIRS APPLIES FOR A STATE WATERS BUFFER VARIANCE. CONTACT GEORGIA POWER ENVIRONMENTAL AFFAIRS FOR ASSISTANCE.
 - PRIOR TO COMMENCING CONSTRUCTION ACTIVITIES FOR THIS PROJECT, THE PERMITTED BOUNDARY, THE LIMITS OF DISTURBANCE AND ALL WETLANDS AND STATE WATERS BUFFERS WITHIN 200 FEET OF THE LIMITS OF DISTURBANCE OR WITHIN THE PROPERTY BOUNDARY (WHICHEVER IS CLOSER) SHALL BE CLEARLY FLAGGED AND STAKED. THESE MARKINGS SHALL BE MAINTAINED UNTIL COMPLETION OF CONSTRUCTION / CLOSURE ACTIVITIES. SHOULD ANY OF THE MARKINGS BE DISTURBED, THE CONTRACTOR SHALL NOTIFY GEORGIA POWER COMPANY IMMEDIATELY. ALL CONSTRUCTION PERSONNEL SHALL BE SHOWN THE LOCATION OF THE LIMITS OF DISTURBANCE, STATE WATERS BUFFERS, STATE WATERS AND WETLANDS OUTSIDE THE LIMITS OF DISTURBANCE TO PREVENT HEAVY EQUIPMENT ENCROACHMENT INTO THESE AREAS.

P:\Industrial\054 - Southern Company\07 - Plant Yates CCR Permitting\3 - CCR Permit\054-107-R6-02 (Index).dwg (11/12/18) MATTHEW TRUENELL



PROPERTY BOUNDARY & INDEX			
CLOSURE DRAWINGS			
FOR GEORGIA POWER PLANT YATES INACTIVE CCR LANDFILL - R6 CCR LANDFILL COWETA COUNTY, GEORGIA			
Atlantic Coast Consulting, Inc. 770-594-5998 www.atcc.net		630 Colonial Park Dr. Suite 110 Roswell, GA 30075	
PROJ. NO.	1054-107-R6	DWG.	EDIT 11/12/18
SCALE	1" = 1,000'		
NOVEMBER 2018		SHEET 2	OF 7

UTILITY LEGEND

- ⊕ Electric Manhole
- ⊙ Electric Meter
- ⊕ Gas Manhole
- ⊙ Gas Valve
- ⊕ Gas Meter
- ⊙ Sanitary Sewer Manhole
- ⊕ Sanitary Sewer Cleanout
- ⊙ Storm Sewer Manhole
- ⊕ Telephone Manhole
- ⊙ Water Manhole
- ⊕ Water Valve
- ⊙ Water Meter
- ⊕ Fire Hydrant
- ⊙ Well
- ⊕ Power Pole
- ⊙ Transmission Tower
- ⊕ Guy Wire

LOCATION MAP - NOT TO SCALE

PLAT ABBREVIATIONS

- IPF - Iron Pin Found
- IPS - Iron Pin Set
- FPS - Fence Post Set
- OTF - Open Top Pipe
- CIP - Crimp Top Pipe
- Conc. - Concrete
- Alumn. - Aluminum
- P/L - Property Line
- R/W - Right of Way
- C/L - Centerline
- F/L - Fenceline
- T/L - Transmission Line
- N/F - Now or Formerly
- DB - Dead Book
- PB - Plat Book
- MF - Map File No.
- N.T.S. - Not to Scale
- P.O.B. - Point of Commencement
- P.O.B. - Point of Beginning
- ⊕ BH - Geotechnical Bore Hole
- UGP - Underground Power
- OHU - Overhead Utilities
- GPC - Georgia Power Company
- (1173) Land Lot
- Land Lot Line
- Proposed CCR Permit Boundary

MONUMENTATION LEGEND

- ⊕ Iron Pin Set
- ⊙ Iron Pin Found
- ⊕ Monument Set
- ⊙ Monument Found
- ⊕ Computed Point
- ⊙ Control or Traverse Point
- ⊕ Geodetic Control Point
- ⊙ Benchmark or Temporary Benchmark (TBW)

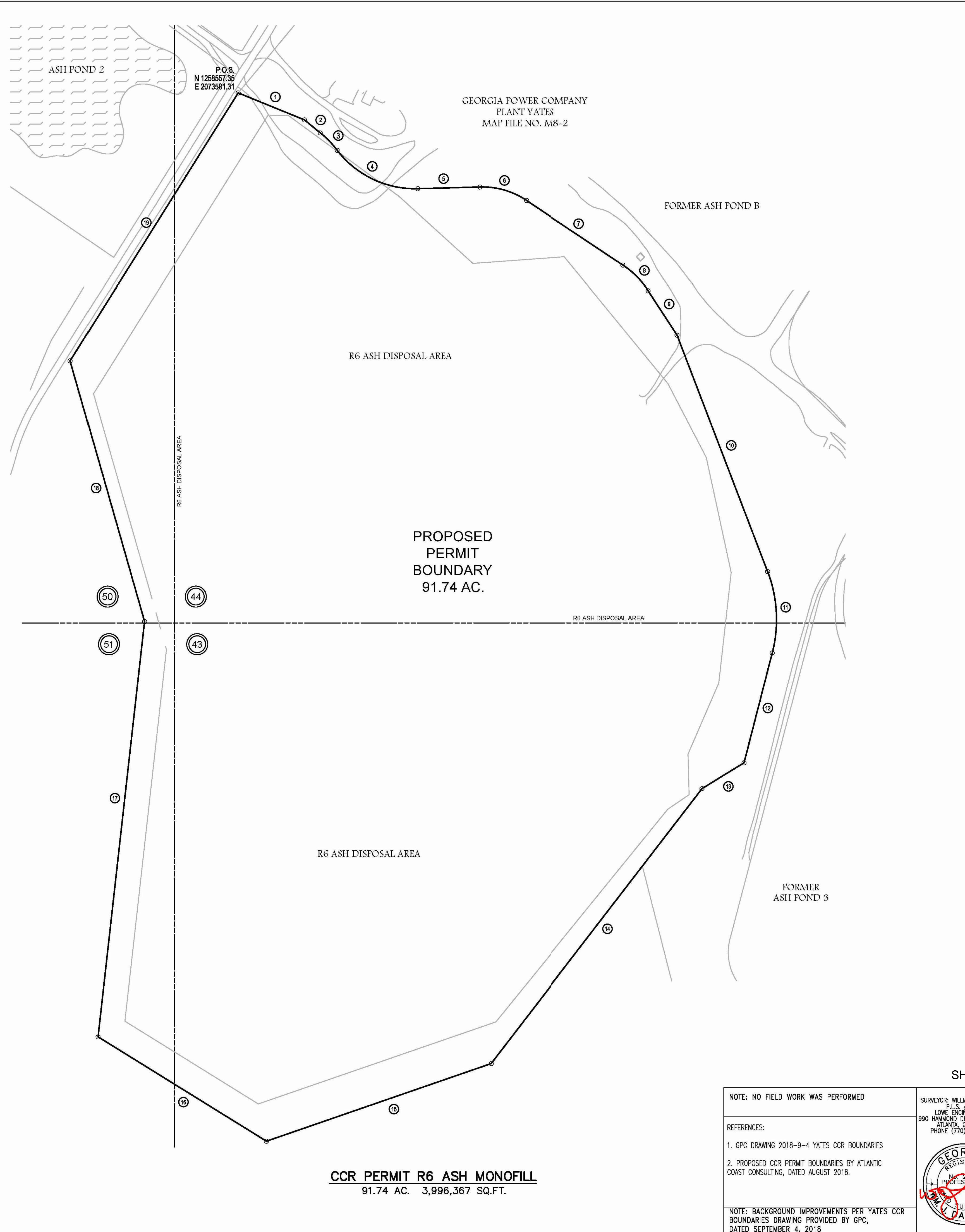
Plant Yates - R6 Ash Monofill

All that parcel or tract of land lying and being in land lots 43, 44, 50 and 51 of the 4th District, Coweta County, Georgia and being more particularly described as follows:

The Point of Beginning is located at the Georgia State Plane, West Zone, NAD83 coordinates of: N 1262995.61 and E 2076620.15; thence running South 67 degrees 50 minutes 45 seconds East a distance of 200.17 feet to a point; Thence running South 50 degrees 36 minutes 59 seconds East a distance of 57.16 feet to a point; Thence running along a curve to the right on arc distance of 68.28 feet (said arc having a radius of 300.00 feet and being subtended by a chord 68.14 feet in length lying to the southwest of said arc and bearing South 44 degrees 05 minutes 44 seconds East) to a point; Thence running along a curve to the left on arc distance of 259.12 feet (said arc having a radius of 275.00 feet and being subtended by a chord 249.64 feet in length lying to the northeast of said arc and bearing South 64 degrees 34 minutes 05 seconds East) to a point; Thence running North 88 degrees 26 minutes 20 seconds East a distance of 173.59 feet to a point; Thence running along a curve to the right on arc distance of 138.30 feet (said arc having a radius of 225.00 feet and being subtended by a chord 136.14 feet in length lying to the southwest of said arc and bearing South 73 degrees 57 minutes 08 seconds East) to a point; Thence running South 56 degrees 20 minutes 32 seconds East a distance of 326.31 feet to a point; Thence running along a curve to the right on arc distance of 101.30 feet (said arc having a radius of 250.00 feet and being subtended by a chord 100.60 feet in length lying to the southwest of said arc and bearing South 44 degrees 44 minutes 04 seconds East) to a point; Thence running South 33 degrees 07 minutes 37 seconds East a distance of 147.77 feet to a point; Thence running South 20 degrees 57 minutes 17 seconds East a distance of 708.06 feet to a point; Thence running along a curve to the right on arc distance of 231.27 feet (said arc having a radius of 375.00 feet and being subtended by a chord 227.62 feet in length lying to the west of said arc and bearing South 03 degrees 17 minutes 13 seconds East) to a point; Thence running South 14 degrees 22 minutes 52 seconds West a distance of 316.95 feet to a point; Thence running South 58 degrees 28 minutes 29 seconds West a distance of 138.08 feet to a point; Thence running South 37 degrees 34 minutes 43 seconds West a distance of 970.70 feet to a point; Thence running South 70 degrees 56 minutes 24 seconds West a distance of 665.27 feet to a point; Thence running North 58 degrees 11 minutes 31 seconds West a distance of 554.02 feet to a point; Thence running North 06 degrees 22 minutes 56 seconds East a distance of 1168.97 feet to a point; Thence running North 15 degrees 55 minutes 04 seconds West a distance of 757.56 feet to a point; Thence running North 32 degrees 05 minutes 26 seconds East a distance of 883.93 feet to a point and The Point of Beginning;

Said tract contains 91.74 acres (3,996,367 square feet).

GRAPHIC SCALE



Plant Yates CCR Permit R6 Landfill Call Table

Course	Bearing	Distance	Arc	Radius
1	S 67°50'45" E	200.17'		
2	S 50°36'59" E	57.16'		
3	S 44°05'44" E	68.14'	68.28'	300.00'
4	S 64°34'05" E	249.64'	259.12'	275.00'
5	N 88°26'20" E	173.59'		
6	S 73°57'06" E	136.14'	138.30'	225.00'
7	S 56°20'32" E	326.31'		
8	S 44°44'04" E	100.60'	101.30'	250.00'
9	S 33°07'37" E	147.77'		
10	S 20°57'17" E	708.06'		
11	S 03°17'13" E	227.62'	231.27'	375.00'
12	S 14°22'52" W	316.95'		
13	S 58°28'29" W	138.08'		
14	S 37°34'43" W	970.70'		
15	S 70°56'24" W	665.27'		
16	N 58°11'31" W	554.02'		
17	N 06°22'56" E	1168.97'		
18	N 15°55'04" W	757.56'		
19	N 32°05'26" E	883.93'		

CCR PERMIT R6 ASH MONOFILL
91.74 AC. 3,996,367 SQ.FT.

NOTE: NO FIELD WORK WAS PERFORMED

REFERENCES:

- GPC DRAWING 2018-9-4 YATES CCR BOUNDARIES
- PROPOSED CCR PERMIT BOUNDARIES BY ATLANTIC COAST CONSULTING, DATED AUGUST 2018.

NOTE: BACKGROUND IMPROVEMENTS PER YATES CCR BOUNDARIES DRAWING PROVIDED BY GPC, DATED SEPTEMBER 4, 2018

SURVEYOR: WILLIAM J. DANIEL III
P.L.S. #2257
LOWE ENGINEERS LLC
990 HAMMOND DRIVE, SUITE 900
ATLANTA, GA 30328
PHONE (770) 657-8400

I hereby certify that this survey has been prepared in conformity with the Technical Standards for Property Surveys in Georgia as set forth in Chapter 180-7 on the Rules of the Georgia Board of Registration for Professional Engineers and Land Surveyors and as set forth in the Georgia Plot Act O.C.G.A. 15-6-67.

And further certify that according to Georgia Code Section 15-6-67(g), this plot is not required to be reviewed by any local governing authorities prior to recording. Per said section, No approval shall be required if no new streets or roads are created or no new utility improvements are required or no new sanitary sewer or approval of a septic tank is required. No such improvements are required hereon.

Date: October 19, 2018

PERMIT BOUNDARY & LEGAL DESCRIPTION

CLOSURE DRAWINGS

FOR

GEORGIA POWER
PLANT YATES
INACTIVE CCR LANDFILL - R6 CCR LANDFILL
COWETA COUNTY, GEORGIA

PATH - T:\Working2\Ash\Yates\2018090227 Plant Yates - Ash Pond CCR Permitting - Surveying Support

SHEET 3 OF 7

GEORGIA POWER CO., ATLANTA, GA.
Land Department

Survey of
Plant Yates - R6 Ash Monofill
Permitted Site Boundary

LAND LOTS 43, 44, 50 & 51, 4TH DISTRICT, COWETA COUNTY, GEORGIA

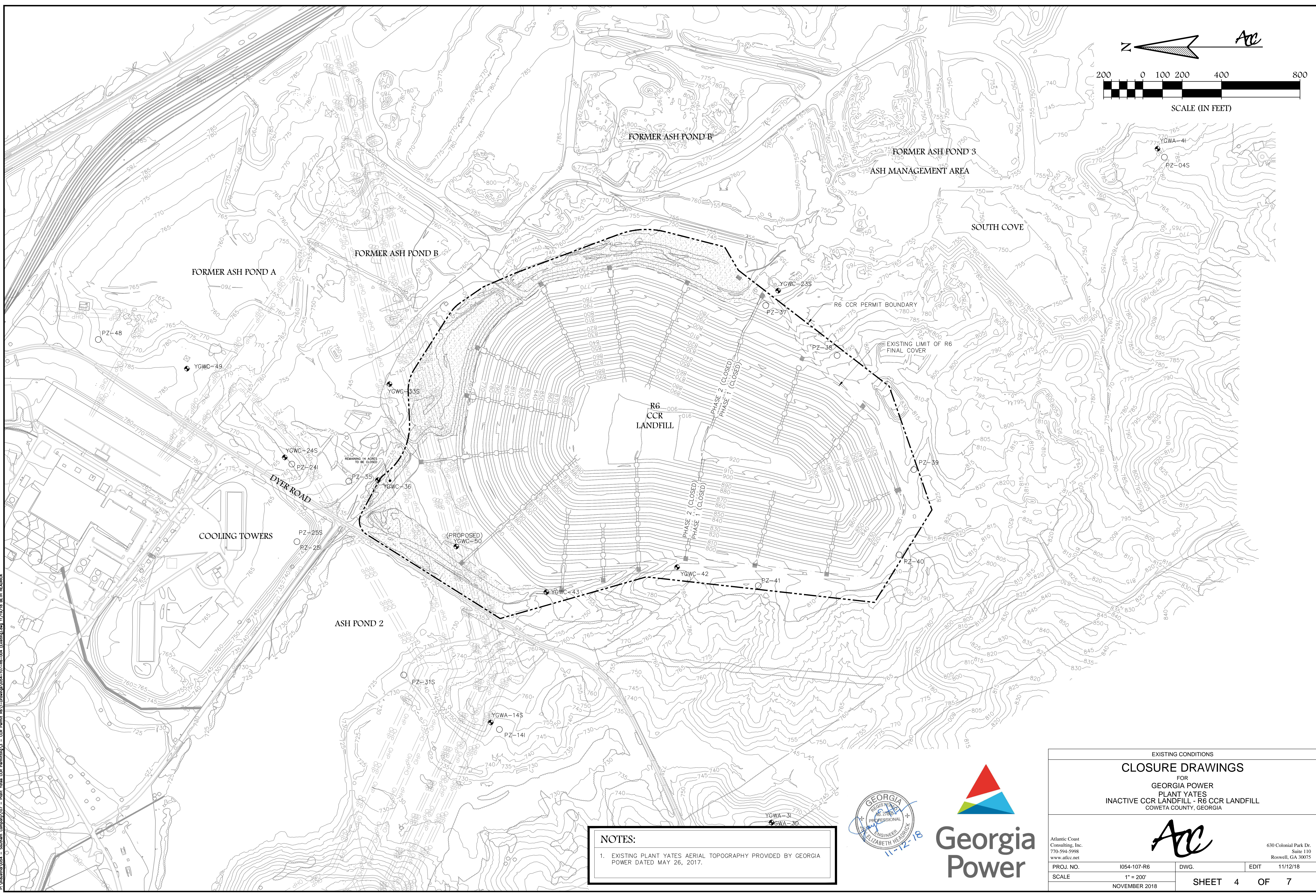
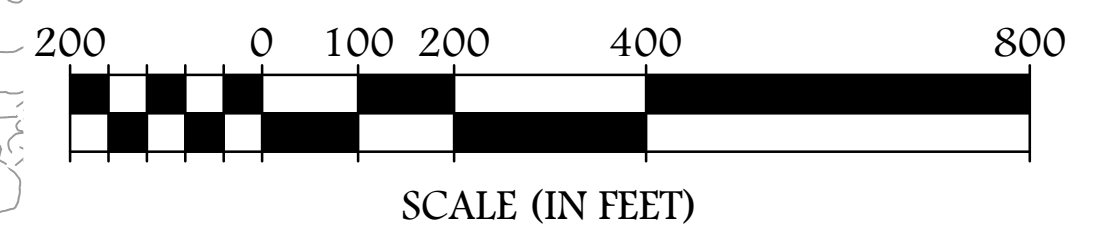
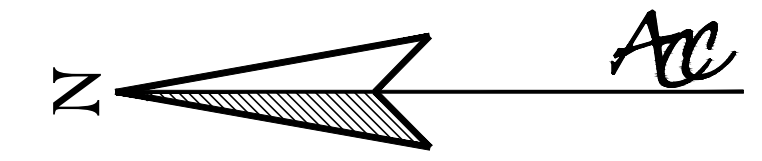
DR. DE. TR. Checked

SCALE DATE

1" = 150' 10.22.2018

DRAWING NUMBER


P469-8(3)



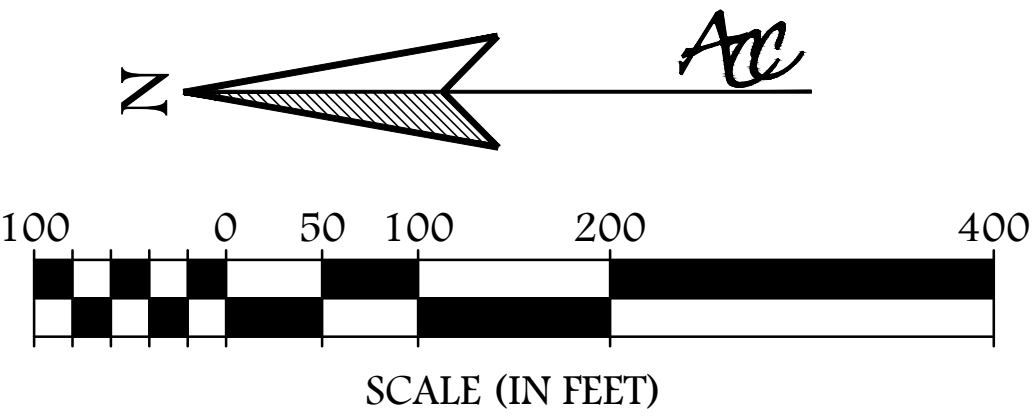
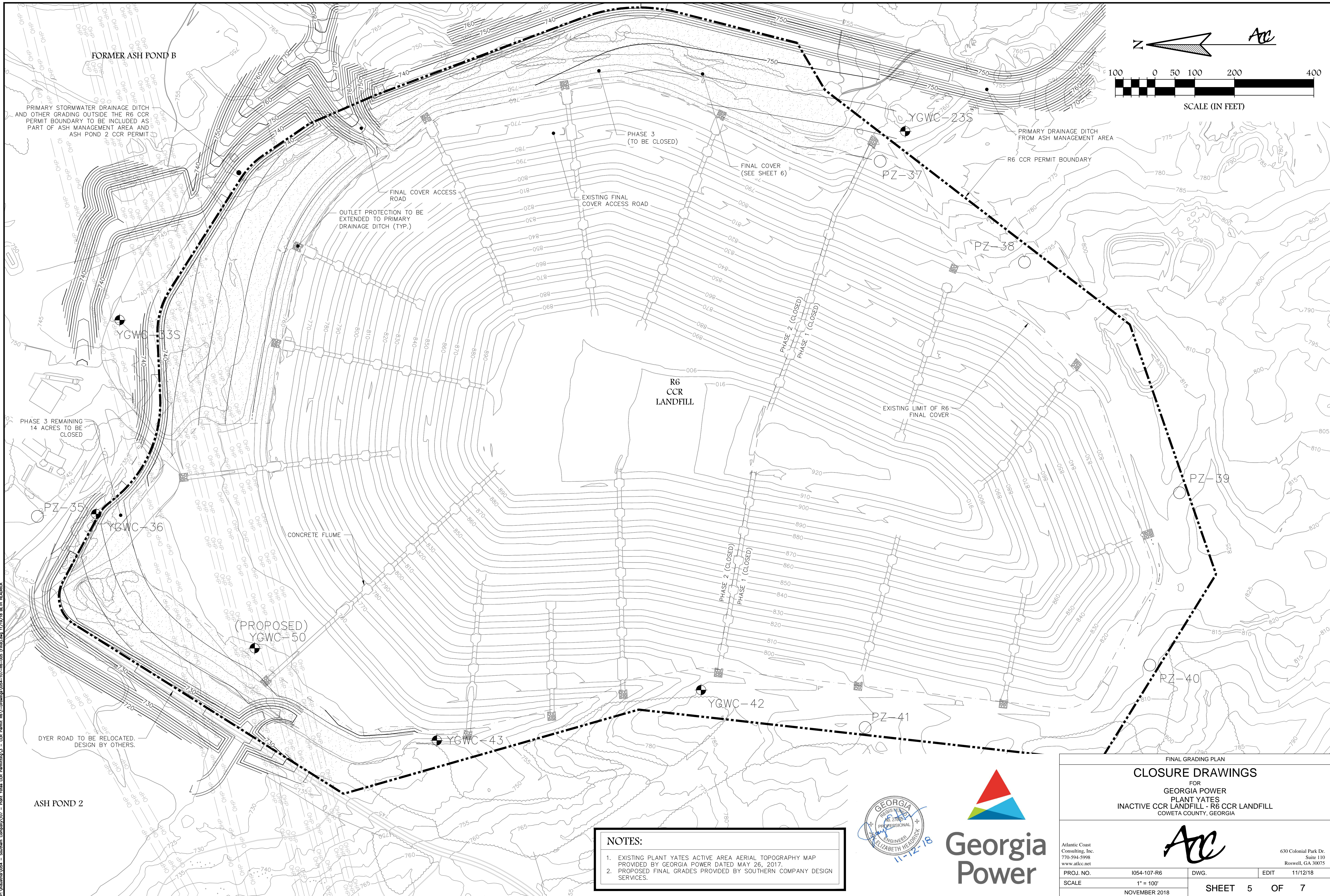
NOTES:

1. EXISTING PLANT YATES AERIAL TOPOGRAPHY PROVIDED BY GEORGIA POWER DATED MAY 26, 2017.



EXISTING CONDITIONS			
CLOSURE DRAWINGS			
FOR GEORGIA POWER PLANT YATES INACTIVE CCR LANDFILL - R6 CCR LANDFILL COWETA COUNTY, GEORGIA			
			
PROJ. NO.	1054-107-R6	DWG.	EDIT
SCALE	1" = 200'		11/12/18
	NOVEMBER 2018	SHEET 4	OF 7

P:\Industry\1054 - Southern Company\107 - Plant Yates CCR Permit\1054-107-R6-004 (Existing).dwg 11/12/18 BETH HEARD



FORMER ASH POND B
 PRIMARY STORMWATER DRAINAGE DITCH AND OTHER GRADING OUTSIDE THE R6 CCR PERMIT BOUNDARY TO BE INCLUDED AS PART OF ASH MANAGEMENT AREA AND ASH POND 2 CCR PERMIT

PHASE 3 REMAINING 14 ACRES TO BE CLOSED

DYER ROAD TO BE RELOCATED. DESIGN BY OTHERS.

ASH POND 2

- NOTES:**
1. EXISTING PLANT YATES ACTIVE AREA AERIAL TOPOGRAPHY MAP PROVIDED BY GEORGIA POWER DATED MAY 26, 2017.
 2. PROPOSED FINAL GRADES PROVIDED BY SOUTHERN COMPANY DESIGN SERVICES.



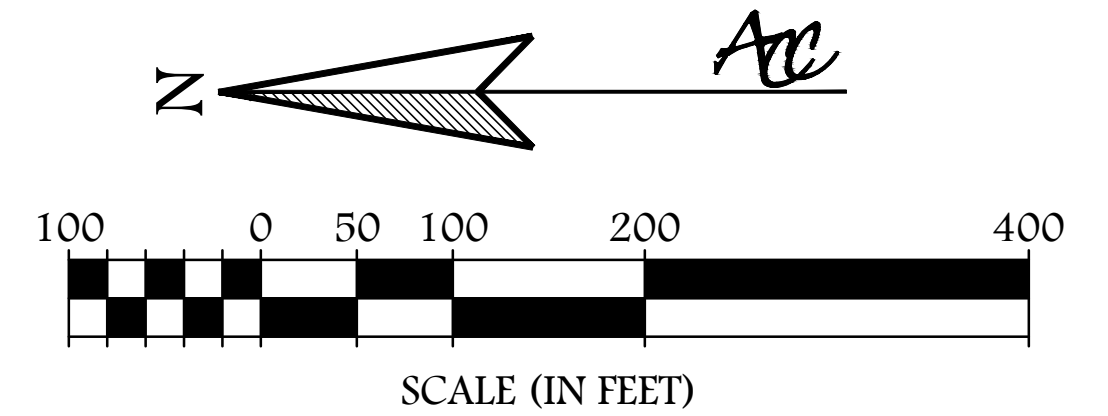
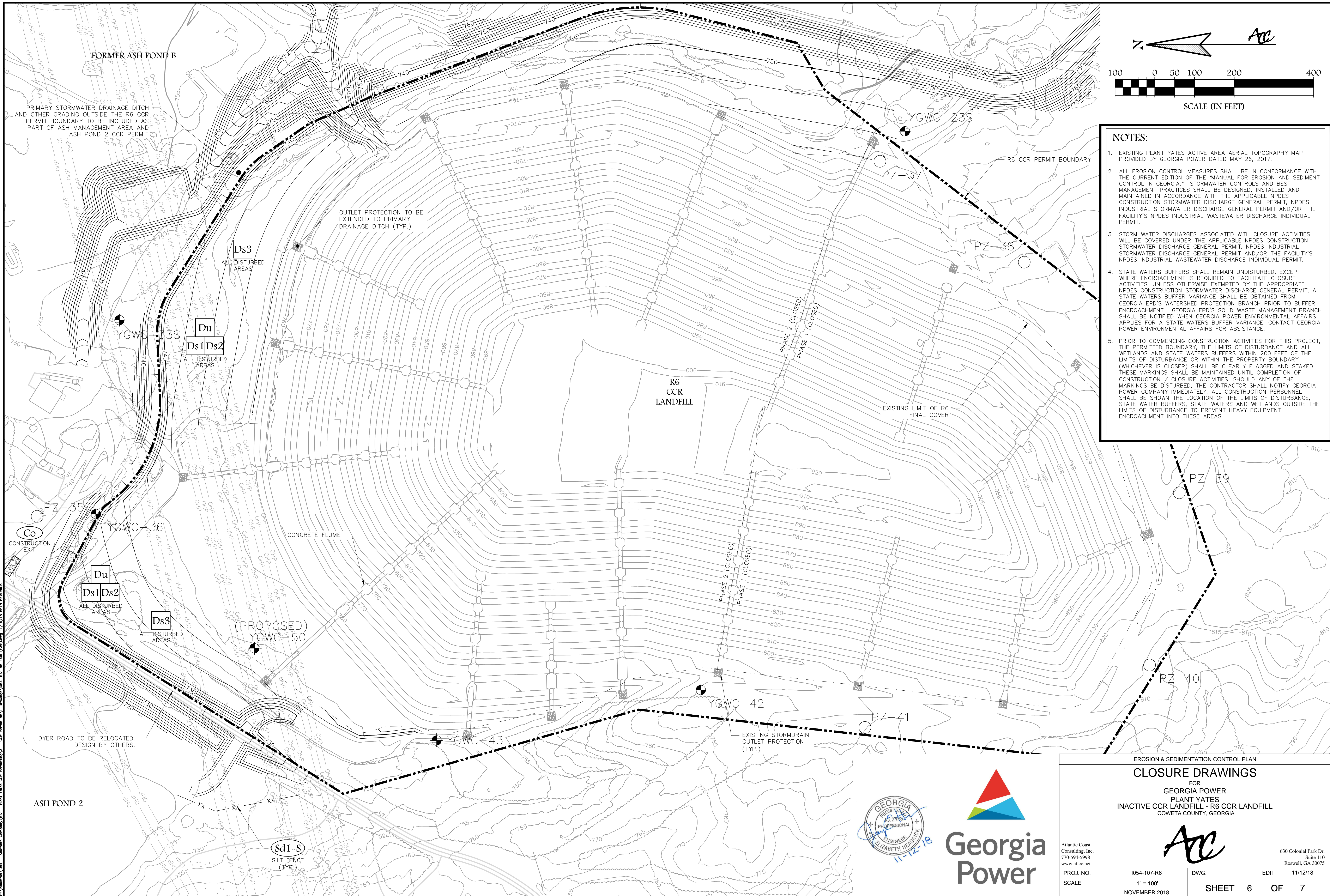
FINAL GRADING PLAN
CLOSURE DRAWINGS
 FOR
 GEORGIA POWER
 PLANT YATES
 INACTIVE CCR LANDFILL - R6 CCR LANDFILL
 COWETA COUNTY, GEORGIA

AC

Atlantic Coast Consulting, Inc.
 770-594-5998
 www.atcc.net

630 Colonial Park Dr.
 Suite 110
 Roswell, GA 30075

PROJ. NO.	1054-107-R6	DWG.	EDIT	11/12/18
SCALE	1" = 100'	NOVEMBER 2018		SHEET 5 OF 7



- NOTES:**
- EXISTING PLANT YATES ACTIVE AREA AERIAL TOPOGRAPHY MAP PROVIDED BY GEORGIA POWER DATED MAY 26, 2017.
 - ALL EROSION CONTROL MEASURES SHALL BE IN CONFORMANCE WITH THE CURRENT EDITION OF THE "MANUAL FOR EROSION AND SEDIMENT CONTROL IN GEORGIA." STORMWATER CONTROLS AND BEST MANAGEMENT PRACTICES SHALL BE DESIGNED, INSTALLED AND MAINTAINED IN ACCORDANCE WITH THE APPLICABLE NPDES CONSTRUCTION STORMWATER DISCHARGE GENERAL PERMIT, NPDES INDUSTRIAL STORMWATER DISCHARGE GENERAL PERMIT AND/OR THE FACILITY'S NPDES INDUSTRIAL WASTEWATER DISCHARGE INDIVIDUAL PERMIT.
 - STORM WATER DISCHARGES ASSOCIATED WITH CLOSURE ACTIVITIES WILL BE COVERED UNDER THE APPLICABLE NPDES CONSTRUCTION STORMWATER DISCHARGE GENERAL PERMIT, NPDES INDUSTRIAL STORMWATER DISCHARGE GENERAL PERMIT AND/OR THE FACILITY'S NPDES INDUSTRIAL WASTEWATER DISCHARGE INDIVIDUAL PERMIT.
 - STATE WATERS BUFFERS SHALL REMAIN UNDISTURBED, EXCEPT WHERE ENCROACHMENT IS REQUIRED TO FACILITATE CLOSURE ACTIVITIES, UNLESS OTHERWISE EXEMPTED BY THE APPROPRIATE NPDES CONSTRUCTION STORMWATER DISCHARGE GENERAL PERMIT. A STATE WATERS BUFFER VARIANCE SHALL BE OBTAINED FROM GEORGIA EPD'S WATERSHED PROTECTION BRANCH PRIOR TO BUFFER ENCROACHMENT. GEORGIA EPD'S SOLID WASTE MANAGEMENT BRANCH SHALL BE NOTIFIED WHEN GEORGIA POWER ENVIRONMENTAL AFFAIRS APPLIES FOR A STATE WATERS BUFFER VARIANCE. CONTACT GEORGIA POWER ENVIRONMENTAL AFFAIRS FOR ASSISTANCE.
 - PRIOR TO COMMENCING CONSTRUCTION ACTIVITIES FOR THIS PROJECT, THE PERMITTED BOUNDARY, THE LIMITS OF DISTURBANCE AND ALL WETLANDS AND STATE WATERS BUFFERS WITHIN 200 FEET OF THE LIMITS OF DISTURBANCE OR WITHIN THE PROPERTY BOUNDARY (WHICHEVER IS CLOSER) SHALL BE CLEARLY FLAGGED AND STAKED. THESE MARKINGS SHALL BE MAINTAINED UNTIL COMPLETION OF CONSTRUCTION / CLOSURE ACTIVITIES. SHOULD ANY OF THE MARKINGS BE DISTURBED, THE CONTRACTOR SHALL NOTIFY GEORGIA POWER COMPANY IMMEDIATELY. ALL CONSTRUCTION PERSONNEL SHALL BE SHOWN THE LOCATION OF THE LIMITS OF DISTURBANCE, STATE WATERS BUFFERS, STATE WATERS AND WETLANDS OUTSIDE THE LIMITS OF DISTURBANCE TO PREVENT HEAVY EQUIPMENT ENCROACHMENT INTO THESE AREAS.

FORMER ASH POND B
 PRIMARY STORMWATER DRAINAGE DITCH AND OTHER GRADING OUTSIDE THE R6 CCR PERMIT BOUNDARY TO BE INCLUDED AS PART OF ASH MANAGEMENT AREA AND ASH POND 2 CCR PERMIT

OUTLET PROTECTION TO BE EXTENDED TO PRIMARY DRAINAGE DITCH (TYP.)

R6 CCR LANDFILL

EXISTING LIMIT OF R6 FINAL COVER

CONCRETE FLUME

EXISTING STORMDRAIN OUTLET PROTECTION (TYP.)

DYER ROAD TO BE RELOCATED. DESIGN BY OTHERS.

ASH POND 2

Sd1-S
 SILT FENCE (TYP.)

EROSION & SEDIMENTATION CONTROL PLAN
CLOSURE DRAWINGS

FOR
 GEORGIA POWER
 PLANT YATES
 INACTIVE CCR LANDFILL - R6 CCR LANDFILL
 COWETA COUNTY, GEORGIA



Atlantic Coast Consulting, Inc.
 770-594-5998
 www.atcc.net



630 Colonial Park Dr.
 Suite 110
 Roswell, GA 30075

PROJ. NO.	1054-107-R6	DWG.	EDIT	11/12/18
SCALE	1" = 100'	SHEET 6 OF 7		
	NOVEMBER 2018			

P:\Industrial\0454 - Southern Company\07 - Plant Yates CCR Permit\04 - CCR Permit\08 - Drawings\0454-07-R6-06 (L&S).dwg 11/12/18 BETH HENDRICK

MONTH	TEMPORARY SEED	RATE/ACRE	RATES/1,000 SQFT.		PERMANENT SEED	RATE/ACRE	RATES/1,000 SQUARE FEET		
			FERTILIZER	LIME STONE			FERTILIZER	LIME STONE	MAINTENANCE
JANUARY	RYEGRASS	40-50 lb.	12 lb(10-10-10)	45 lb	UNHULLED BERMUDA SERICEA LESPEDEZA	8-10 lb. 30-40 lb.	12 lb(10-10-10) 35 lb(6-12-12)	45 lb 45 lb	10 lb(10-10-10) 10 lb(10-10-10)
FEBRUARY	RYEGRASS	40-50 lb.	12 lb(10-10-10)	45 lb	UNHULLED BERMUDA SERICEA LESPEDEZA FESCUE	8-10 lb. 30-40 lb. 30-50 lb.	12 lb(10-10-10) 35 lb(6-12-12) 35 lb(6-12-12)	45 lb 45 lb 45 lb	10 lb(10-10-10) 10 lb(10-10-10) 10 lb(10-10-10)
MARCH	RYE ANNUAL LESPEDEZA WEEPING LOVEGRASS	2-3 bu. 20-25 lb. 4-6 lb.	12 lb(10-10-10) 35 lb(6-12-12) 12 lb(10-10-10)	45 lb 45 lb 45 lb	UNHULLED BERMUDA SERICEA LESPEDEZA FESCUE	8-10 lb. 30-40 lb. 30-50 lb.	12 lb(10-10-10) 35 lb(6-12-12) 35 lb(6-12-12)	45 lb 45 lb 45 lb	10 lb(10-10-10) 10 lb(10-10-10) 10 lb(10-10-10)
APRIL	RYE BROWN TOP MILLET ANNUAL LESPEDEZA SUDAN GRASS	2-3 bu. 30-40 lb. 20-25 lb. 35 lb.	12 lb(10-10-10) 12 lb(10-10-10) 35 lb(6-12-12) 35 lb(6-12-12)	45 lb 45 lb 45 lb 45 lb	WEEPING LOVEGRASS HULLED BERMUDA BAHIA	4-6 lb. 5-6 lb. 40-60 lb.	12 lb(10-10-10) 12 lb(10-10-10) 35 lb(6-12-12)	45 lb 45 lb 45 lb	10 lb(10-10-10) 10 lb(10-10-10) 10 lb(10-10-10)
MAY	WEEPING LOVEGRASS SUDAN GRASS BROWN TOP MILLET	4-6 lb. 35 lb. 30-40 lb.	12 lb(10-10-10) 35 lb(6-12-12) 12 lb(10-10-10)	45 lb 45 lb 45 lb	WEEPING LOVEGRASS HULLED BERMUDA BAHIA	4-6 lb. 5-6 lb. 40-60 lb.	12 lb(10-10-10) 12 lb(10-10-10) 35 lb(6-12-12)	45 lb 45 lb 45 lb	10 lb(10-10-10) 10 lb(10-10-10) 10 lb(10-10-10)
JUNE	WEEPING LOVEGRASS SUDAN GRASS BROWN TOP MILLET	4-6 lb. 35 lb. 30-40 lb.	12 lb(10-10-10) 35 lb(6-12-12) 12 lb(10-10-10)	45 lb 45 lb 45 lb	WEEPING LOVEGRASS HULLED BERMUDA BAHIA	4-6 lb. 5-6 lb. 40-60 lb.	12 lb(10-10-10) 12 lb(10-10-10) 35 lb(6-12-12)	45 lb 45 lb 45 lb	10 lb(10-10-10) 10 lb(10-10-10) 10 lb(10-10-10)
JULY	WEEPING LOVEGRASS SUDAN GRASS BROWN TOP MILLET	4-6 lb. 35 lb. 30-40 lb.	12 lb(10-10-10) 35 lb(6-12-12) 12 lb(10-10-10)	45 lb 45 lb 45 lb	WEEPING LOVEGRASS SUDAN GRASS BROWN TOP MILLET	4-6 lb. 35 lb. 30-40 lb.	12 lb(10-10-10) 35 lb(6-12-12) 12 lb(10-10-10)	45 lb 45 lb 45 lb	10 lb(10-10-10) 10 lb(10-10-10) 10 lb(10-10-10)
AUGUST	RYEGRASS WEEPING LOVEGRASS	40-50 lb. 35 lb.	12 lb(10-10-10) 12 lb(10-10-10)	45 lb 45 lb	HULLED BERMUDA BAHIA	5-6 lb. 40-60 lb.	12 lb(10-10-10) 35 lb(6-12-12)	45 lb 45 lb	10 lb(10-10-10) 10 lb(10-10-10)
SEPTEMBER	RYEGRASS TALL FESCUE	40-50 lb. 30-50 lb.	12 lb(10-10-10) 35 lb(6-12-12)	45 lb 45 lb	TALL FESCUE	30-50 lb.	35 lb(6-12-12)	45 lb	10 lb(10-10-10)
OCTOBER	WHEAT	2-3 bu.	12 lb(10-10-10)	45 lb	UNHULLED BERMUDA SERICEA LESPEDEZA FESCUE	8-10 lb. 30-40 lb. 30-50 lb.	12 lb(10-10-10) 35 lb(10-10-10) 35 lb(6-12-12)	45 lb 45 lb 45 lb	10 lb(10-10-10) 10 lb(10-10-10) 10 lb(10-10-10)
NOVEMBER	WHEAT	2-3 bu.	12 lb(10-10-10)	45 lb	UNHULLED BERMUDA FESCUE SERICEA LESPEDEZA	8-10 lb. 30-50 lb. 30-40 lb.	12 lb(10-10-10) 35 lb(10-10-10) 35 lb(6-12-12)	45 lb 45 lb 45 lb	10 lb(10-10-10) 10 lb(10-10-10) 10 lb(10-10-10)
DECEMBER	RYE RYEGRASS WHEAT	2-3 bu. 40-50 lb. 2-3 bu.	12 lb(10-10-10) 12 lb(10-10-10) 12 lb(10-10-10)	45 lb 45 lb 45 lb	UNHULLED BERMUDA SERICEA LESPEDEZA FESCUE	8-10 lb. 30-40 lb. 30-50 lb.	12 lb(10-10-10) 35 lb(10-10-10) 35 lb(6-12-12)	45 lb 45 lb 45 lb	10 lb(10-10-10) 10 lb(10-10-10) 10 lb(10-10-10)

TEMPORARY GRASSING

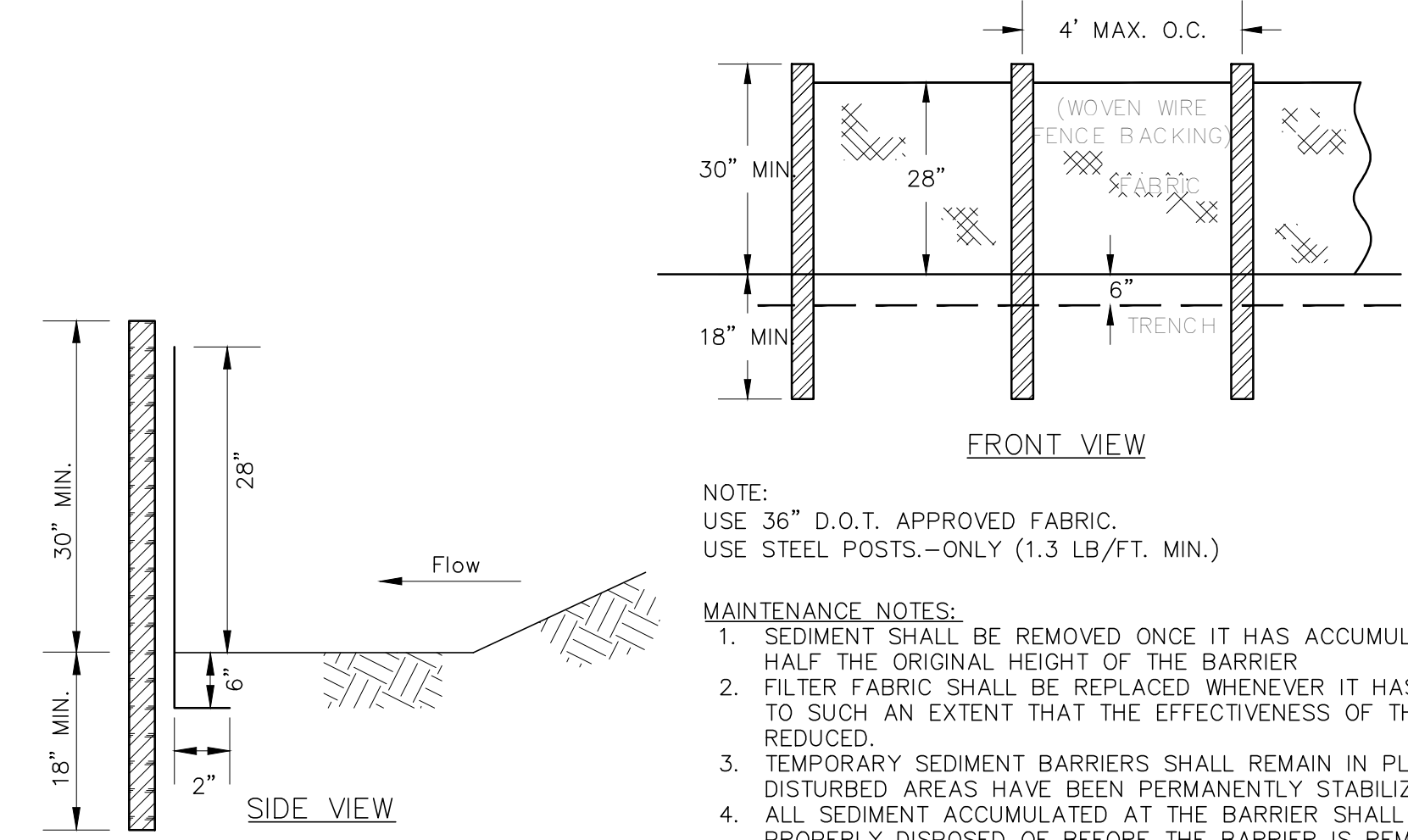
PERMANENT GRASSING

SITE PREPARATION:
 1. GRADE TO PERMIT THE USE OF EQUIPMENT FOR APPLYING AND ANCHORING MULCH.
 2. INSTALL NEEDED EROSION CONTROL MEASURES AS REQUIRED SUCH AS DIKES, DIVERSIONS, BERMS, TERRACES AND SEDIMENT BARRIERS.
 3. LOOSEN COMPACT SOIL TO A MINIMUM DEPTH OF 3 INCHES.

MATERIALS:
 1. DRY STRAW/HAY - 2 TO 4 INCHES DEEP, PROVIDING COMPLETE SOIL COVERAGE
 2. WOOD WASTE (CHIPS/SAWDUST/BARK) - 2 TO 3 INCHES DEEP
 3. CUTBACK ASPHALT - 1200 GALLONS PER ACRE (1/4 GALLON PER SQUARE YARD)
 4. POLYETHYLENE FILM - SECURED OVER BANKS OR STOCKPILED SOIL MATERIAL FOR TEMPORARY PROTECTION.

MULCHING

CRITICAL WORK ZONE - EROSION CONTROL NOTES
 SHADED AREAS SHOWN ON GRADING PHASE EROSION CONTROL PLANS REPRESENT CRITICAL WORK ZONES. AT THE END OF EACH WORK DAY, ALL SLOPES 2:1 OR STEEPER AND HIGHER THAN 5 FEET SHALL RECEIVE SURFACE ROUGHENING, POLYMERS, AND EROSION CONTROL MATTING. ADDITIONALLY, ALL FILL SLOPES SHALL RECEIVE A DIVERSION DIKE AND TEMPORARY DOWN DRAINS ALONG THE TOP OF THE SLOPE PREVENTING DRAINAGE SPILLING OVER THE EDGE AND DOWN THE FACE OF THE SLOPE. THE TEMPORARY DOWN DRAINS SHALL BE CONSTRUCTED WITH PERFORATED STAND PIPES AT THE TOP OF THE SLOPE AND RECONSTRUCTED EACH DAY AS THE SLOPE INCREASES IN HEIGHT.

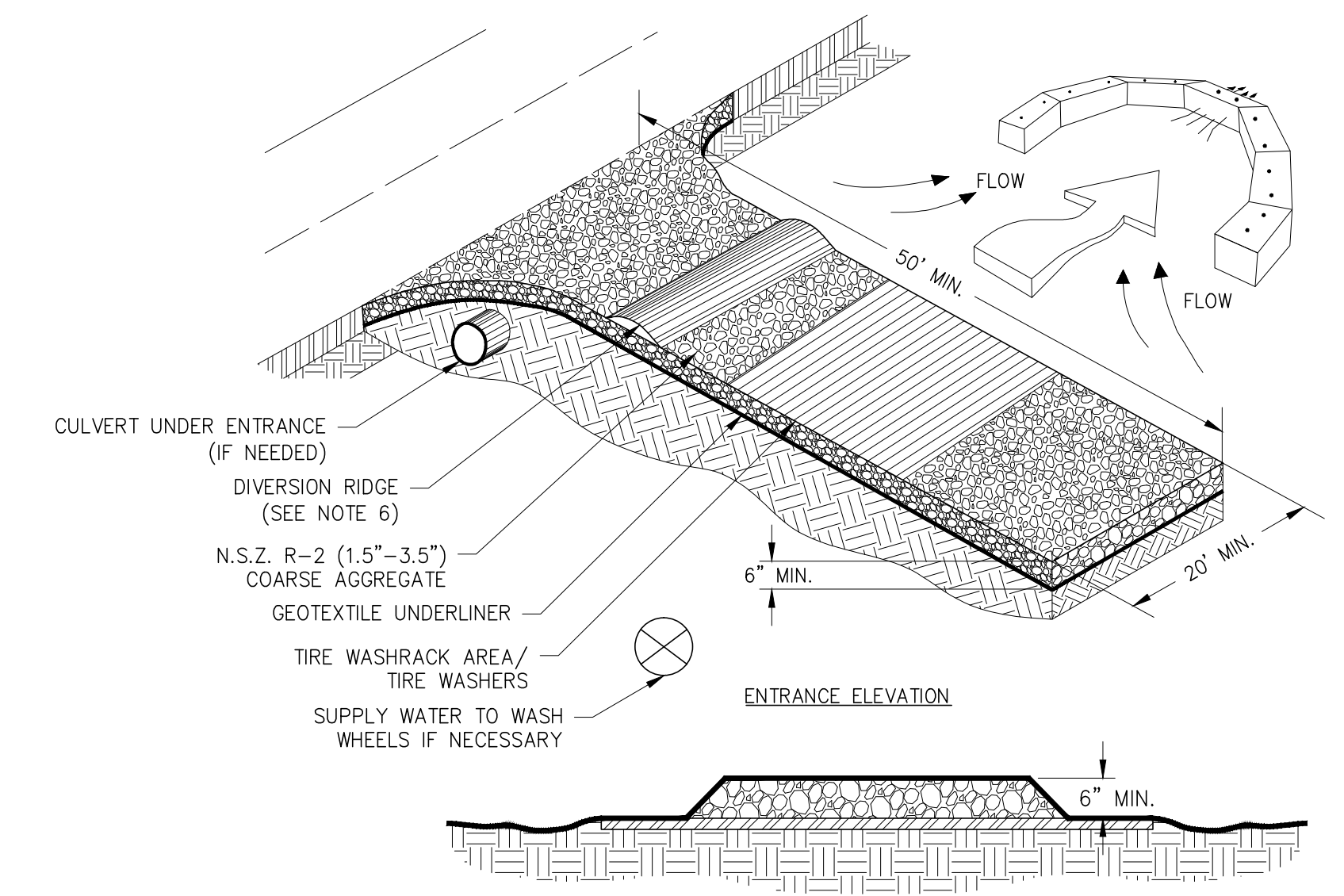


NOTE:
 USE 36" D.O.T. APPROVED FABRIC.
 USE STEEL POSTS--ONLY (1.3 LB/FT. MIN.)

MAINTENANCE NOTES:
 1. SEDIMENT SHALL BE REMOVED ONCE IT HAS ACCUMULATED TO ONE HALF THE ORIGINAL HEIGHT OF THE BARRIER
 2. FILTER FABRIC SHALL BE REPLACED WHENEVER IT HAS DETERIORATED TO SUCH AN EXTENT THAT THE EFFECTIVENESS OF THE FABRIC IS REDUCED.
 3. TEMPORARY SEDIMENT BARRIERS SHALL REMAIN IN PLACE UNTIL DISTURBED AREAS HAVE BEEN PERMANENTLY STABILIZED.
 4. ALL SEDIMENT ACCUMULATED AT THE BARRIER SHALL BE REMOVED AND PROPERLY DISPOSED OF BEFORE THE BARRIER IS REMOVED.
 5. JOINTS OF SILT FENCE SECTIONS SHALL A MINIMUM OF 18 INCHES OVERLAP
 6. WHEN TWO ROWS OF SILT FENCE ARE REQUIRED, THEY SHALL BE INSTALLED A MINIMUM OF 36" APART.

TYPE "S" SILT FENCE DETAIL

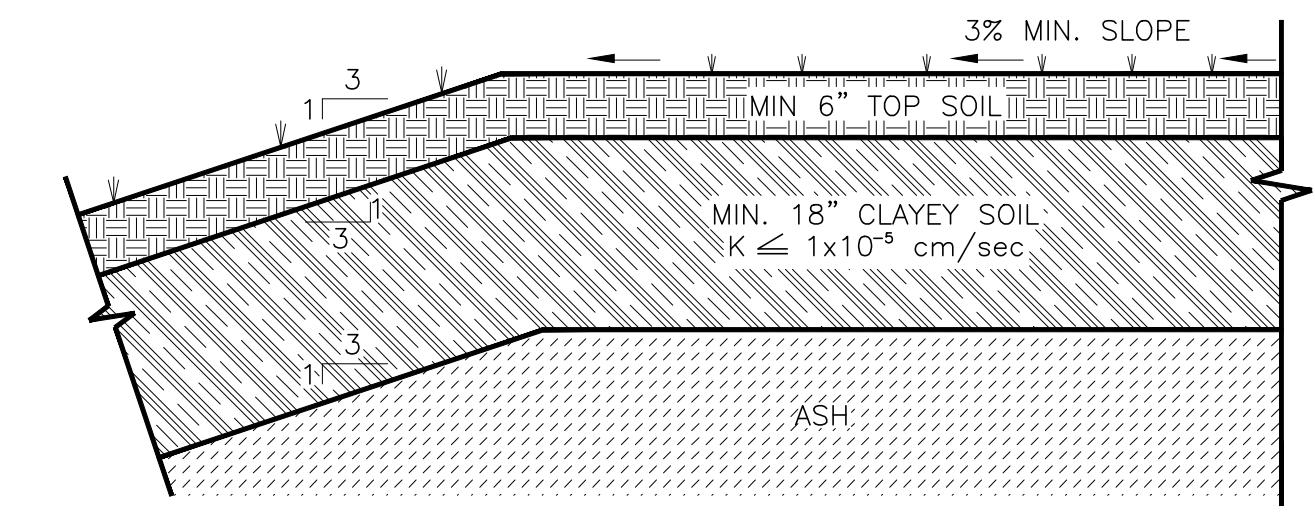
Sd1-S



- NOTES:**
 1. AVOID LOCATING ON STEEP SLOPES OR AT CURVES ON PUBLIC ROADS.
 2. REMOVE ALL VEGETATION AND OTHER UNSUITABLE MATERIAL FROM THE FOUNDATION AREA, GRADE, AND CROWN FOR POSITIVE DRAINAGE.
 3. AGGREGATE SIZE SHALL BE IN ACCORDANCE WITH NATIONAL STONE ASSOCIATION R-2 (1.5"-3.5" STONE).
 4. GRAVEL PAD SHALL HAVE A MINIMUM THICKNESS OF 6".
 5. PAD WIDTH SHALL BE EQUAL FULL WIDTH AT ALL POINTS OF VEHICULAR EGRESS, BUT NO LESS THAN 20'.
 6. A DIVERSION RIDGE SHOULD BE CONSTRUCTED WHEN GRADE TOWARD PAVED AREA IS GREATER THAN 2%.
 7. INSTALL PIPE UNDER THE ENTRANCE IF NEEDED TO MAINTAIN DRAINAGE DITCHES.
 8. WHEN WASHING IS REQUIRED, IT SHOULD BE DONE ON AN AREA STABILIZED WITH CRUSHED STONE THAT DRAINS INTO AN APPROVED SEDIMENT TRAP OR SEDIMENT BASIN (DIVERT ALL SURFACE RUNOFF AND DRAINAGE FROM THE ENTRANCE TO A SEDIMENT CONTROL DEVICE).
 9. WASHRACKS AND/OR TIRE WASHERS MAY BE REQUIRED DEPENDING ON SCALE AND CIRCUMSTANCE. IF NECESSARY, WASHRACK DESIGN MAY CONSIST OF ANY MATERIAL SUITABLE FOR TRUCK TRAFFIC THAT REMOVE MUD AND DIRT.
 10. MAINTAIN AREA IN A WAY THAT PREVENTS TRACKING AND/OR FLOW OF MUD ONTO PUBLIC RIGHTS-OF-WAYS. THIS MAY REQUIRE TOP DRESSING, REPAIR AND/OR CLEANOUT OF ANY MEASURES USED TO TRAP SEDIMENT.

CONSTRUCTION EXIT

Co



FINAL COVER DETAIL (TYP.)



DETAILS			
CLOSURE DRAWINGS			
FOR GEORGIA POWER PLANT YATES INACTIVE CCR LANDFILL - R6 CCR LANDFILL COWETA COUNTY, GEORGIA			
Atlantic Coast Consulting, Inc. 770-594-5998 www.atcc.net	630 Colonial Park Dr. Suite 110 Roswell, GA 30075		
PROJ. NO.	1054-107-R6	DWG.	EDIT
SCALE	N/A		11/12/18
NOVEMBER 2018		SHEET 7 OF 7	

P:\Industry\0404 - Southern Company\07 - Plant Yates CCR Permitting\3 - CCR Permit\05\Drawings\054-07-R6-07 (E&E Draft)\dwg 11/19/18 BETH HEADRICK