



Georgia Power Company

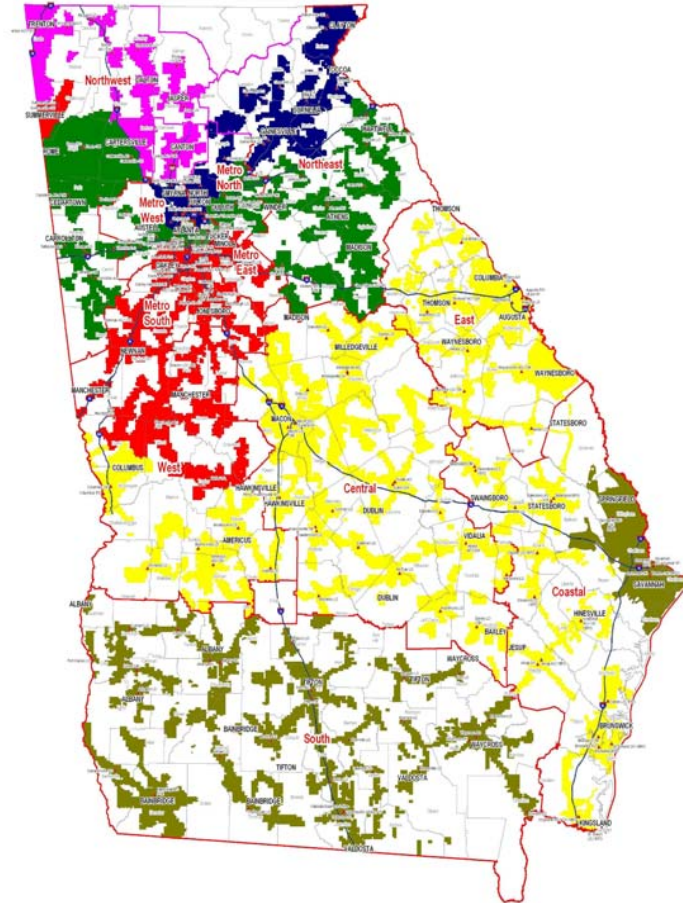
Estimated Total Annual Smart Meter Requirements

(Thousands of Meters)

	2008	2009	2010	2011	2012
Georgia Power	405	469	579	531	302

Georgia Smart Meter Deployment Plan

Year	Regions	Meters
2005- June, 2007	 Northwest  Metro	30,800 23,300
July, 2007- December, 2007	 Northwest	32,300
February, 2008 – August, 2008 January, 2008 – December 2008	 Northeast*  Metro Regions*	124,900 280,800
January, 2009 – April, 2009	 Northwest	116,800
April, 2009 – June, 2009	 Northeast	43,000
March, 2009 – December, 2009	 Metro	310,000
January, 2010 – November 2010	 Metro	531,000
November, 2010 – December, 2010	 West	47,900
January, 2011 – February, 2011	 West	88,400
February, 2011 – June, 2011	 Central	171,000
June, 2011 – October, 2011	 East	153,000
October, 2011 – December, 2011	 Coastal	118,000
January, 2012 – May, 2012	 Coastal	167,700
May, 2012 – August, 2012	 South	134,000



*Includes Sensus AMI meters that will replace non-Sensus AMI meters.